

ALL INFORMATION CONTAINED HEREIN IS THE PROPERTY OF SPRINGLINE ARCHITECTS L.L.C. THE CONCEPTS, IDEAS, DESIGNS AND DETAILS AS SHOWN ON THE DOCUMENTS WERE CREATED, DEVELOPED, AND PRESENTED FOR USE ON THIS SPECIFIC PROJECT AND SHALL NOT BE REUSED FOR ANY PURPOSE WITHOUT THE WRITTEN CONSENT OF SPRINGLINE ARCHITECTS L.L.C. THE OWNER SHALL BE PERMITTED TO RETAIN COPIES FOR INFORMATION AND REFERENCE PURPOSES ONLY.

ACOUSTIC CEILING ASSEMBLIES

SOUND ISOLATION CEILING ASSEMBLY

- PROVIDED AS SCHEDULED IN: RADIO STUDIO (114), RADIO CONTROL (115), AUDIO CONTROL RM (117), VIDEO CONTROL RM (118), AND LARGE TV STUDIO (121)
- IN LARGE TV STUDIO (121) ACOUSTIC FINISHES SHOULD BE APPLIED DIRECTLY TO THE UNDERSIDE OF THE SOUND ISOLATION CEILING.
- IN REMAINING ROOMS, A SUSPENDED GRID CEILING SHOULD BE INSTALLED BELOW THE SOUND ISOLATION CEILING.
- GC TO COORDINATE ALL RELATED MECH. DUCT, FIRE PROTECTION PIPING, PLUMB. AND OTHER SCOPE OF WORK ABOVE SOUND ISOLATION CEILING AND SEAL ALL PENETRATIONS AS PER DETAIL ON SHT. A804.
- AT THESE ACOUSTICALLY SENSITIVE SPACES ALL INTERSECTIONS OF WALLS AND CEILINGS SHOULD BE SEALED AIRTIGHT USING ACOUSTICAL SEALANT. SEAL ALL GAPS, PENETRATIONS AND PERIMETER JOINTS.
- SOUND ATTENUATION BLANKETS SHOULD BE INSTALLED ABOVE THE SOUND ISOLATION CEILINGS. (TYP)

ACOUSTIC CEILING ASSEMBLY

- PROVIDED AS SCHEDULED IN: MULTI-PURPOSE/CONF. RM (106), MULTI-PURPOSE RM (107), POST PRODUCTION (111), RADIO STUDIO (114), RADIO CONTROL RM (115), AUDIO CONTROL RM (117), AND VIDEO CONTROL RM (118) SHOULD HAVE SUSPENDED GRID CEILINGS WITH GLASS FIBER CEILING PANELS, 1" THICK WITH A NOISE REDUCTION COEFFICIENT (NRC) OF 0.95 MINIMUM.
- TV STUDIO (121), VIDEO CONTROL (118), AUDIO CONTROL (117), RADIO CONTROL (115) AND RADIO STUDIO (114) ALL SHOULD INCLUDE ACOUSTICAL ACCESS DOORS IN THE ACOUSTICAL CEILING

KEYNOTES - NEW WORK

#	DESCRIPTION
200	EXTERIOR AND ROOF
200	POWER OPERATED STORM SHUTTER SYSTEM. SEE SPECS.
219	MOTORIZED ANTENNAE SYSTEM-BY OWNER. COORD. W/ ELECT. & STRUCT. DWGS.
251	EXTERIOR WIND-RATED MECH. LOUVER. COORD. OPENING W/ STRUCT. & SEE MECH. DWGS. FINAL LOCATION PER ARCHITECTURAL DWGS.
300	INTERIOR CONSTRUCTION, MILLWORK/CASEWORK
303	ACOUSTICALLY SENSITIVE ROOM W/ SOUND CONTROL MEASURES. SEE SHT. G211 FOR DETAIL INFORMATION ON ACOUSTIC ASSEMBLIES.
400	FF&E
400	4"x4" PRODUCTION LIGHTING & POWER GRID & SPECIALTY LIGHTING (25-50 LIGHTS ANTICIPATED), COORD. ELEV. AFF. POWER & DATA CONNECTION POINTS W/ ELECT. DWGS. (S.I. ITEM)
600	COORDINATION
600	MINISPLIT HVAC UNIT- COORDINATE LOCATION AND MOUNTING W/ MECH. DWGS.
602	SPEAKER SYSTEM MOUNTED TO WALL JUST UNDER LIGHTING GRID, COORD. POWER & MOUNTING REQUIREMENTS (S.I. ITEM).
603	ANSUL FIRE SUPPRESSION SYSTEM AT HOOD. SEE FIRE PROTECT. DWGS.
604	COORD. POWER TO PTZ CAMERA LOCATIONS. SEE ELECT. DWGS.
605	COORDINATE FINAL WIFI ACCESS POINT LOCATIONS W/ ELECT. DWGS. & OWNER.
606	COORDINATE WALL MOUNTED TV / MONITOR W/ POWER & BLOCKING AS REQD. BY MFR. SEE ELECT. DWGS.
608	SECURITY CAMERA. FINAL LOCATION TO BE REVIEWED/ APPROVED BY ARCHITECT, COORDINATE SCOPE WITH ELECT. DWGS.
609	PROVIDE "ON-AIR" ILLUMINATED SIGNAGE OVER DOOR. SEE ELECT. DWGS.
620	EXTERIOR LIGHTING ABOVE WALKING SURFACE. SEE EXT. ELEVS & ELECT. DWGS.
700	RCP
701	EXPOSED TO STRUCTURE WITH SUSPENDED LIGHTING. PAINT ALL ELEMENTS ABOVE FLAT BLACK.
702	SPECIALTY (DIRECTIONAL) LIGHTING. SEE ELECT. DWGS.
703	EXPOSED TO STRUCTURE. PAINT ALL ELEMENTS ABOVE 8" FLAT BLACK.
704	UNDER CABINET LIGHTING. SEE ELECT. DWGS.
705	SPEAKER SYSTEM (S.I. ITEM), COORDINATE MOUNTING REQUIREMENTS W/ OWNER.
706	LINEAR ACOUSTIC SUSPENDED CEILING SYSTEM. SEE SPECS. FINISH LAC-1
707	CHEMICAL FIRE SUPPRESSION SYSTEM AREA. SEE FIRE PROTECT. DWGS.
708	MECHANICAL UNITS- COORD. ANCHORING REQUIREMENTS. SEE MECH. DWGS.
711	MOLD AND MOISTURE RESISTANT GYPSUM CEILING BOARD WITH PAINT FINISH.
712	HARD CEILING ACCESS PANEL. PAINT TO MATCH CEILING. SEE SPECS.
713	GYP BD SOFFIT/ BULKHEAD. SEE DETAIL. PAINT PER FINISH PLAN.
714	4 LAMP SUSPENDED TRACK LIGHTING.
715	SUSPENDED GRID CEILING (NRC 0.95). SEE SPECS.
717	ACOUSTIC SOUND ISOLATION CEILING SYSTEM (TYP@ 10" AFF). COORDINATE HEIGHT W/ DUCTWORK. SEE MECH. DWGS.
718	HIGH NRC ACOUSTIC CEILING SYSTEM (0.95).
800	FINISHES
801	MANUAL BLACKOUT WINDOW SHADE SYSTEM. SEE SPECS.
802	MANUAL WINDOW SHADE SYSTEM. SEE SPECS.
804	MOTORIZED ROLLER SHADE WITH BLACKOUT CAPABILITY. FINISH SH-1

CEILING LEGEND

	4' x 4' STUDIO PRODUCTION/ LIGHTING GRID (SYSTEMS INTEGRATOR ITEM 0066-OWNER PROVIDED, OWNER INSTALLED)		RETURN LINEAR GRILLE. APPLY ONLY IN LINEAR CEILINGS - SEE MECHANICAL.
	2' x 2' ACOUSTIC CEILING TILE (ACT-1), NRC RATING OF 0.95 MINIMUM		SUPPLY LINEAR GRILLE - SEE MECHANICAL. APPLY ONLY IN LINEAR CEILINGS
	LINEAR ACOUSTIC CEILING SYSTEM (LAC-1)		EXHAUST GRILLE - SEE MECHANICAL
	EXTERIOR LINEAR CEILING (ELC-1)		RETURN GRILLE - SEE MECHANICAL
	NEW GYP BOARD CEILING/ SOFFIT (PAINT, TYP)		SUPPLY GRILLE - SEE MECHANICAL
	RECESSED CAN LIGHT FIXTURE - SEE ELECTRICAL		CEILING HEIGHT 9'-0" UNLESS OTHERWISE NOTED
	SURFACE MNTD. LINEAR VERTICAL FIXTURE ALIGNED W/ RECESSED LINEAR FIXTURES IN LOBBY		ACCESS DOOR 1'-8" X 1'-8" - SEE SPECS.
	2' x 4' LAY-IN FIXTURE - SEE ELECTRICAL		ACOUSTIC CEILING SYSTEM ACCESS DOOR (MEET/EXCEED ACOUSTIC STC/ NC VALUE OF ACOUSTIC DESIGN REPORT)
	STRIP LED LIGHT FIXTURE		
	LED TRACK LIGHT FIXTURE		
	EXIT SIGN (ARROW INDICATES DIRECTIONAL SIGNAGE)		
	KEYNOTES - SEE SHT. G001		

GENERAL LEGEND

REFER TO SHEET G001 FOR GENERAL LEGENDS, KEYNOTES AND DRAWING INDEX SUCH AS WINDOW TAGS, DOOR TAGS, STOREFRONT TAGS, AND WALL TAGS.

RATED WALL LEGEND

	NON-RATED SMOKE PARTITION
	1 HOUR FIRE BARRIER
	1 HOUR SMOKE BARRIER
	2 HOUR FIRE BARRIER
	2 HOUR SMOKE BARRIER



WTJX Broadcasting Facility

Haypiece Hill, Parcels 158A and 158 Rem
Submarine base, St. Thomas USVI

FIRST FLOOR REFLECTED CEILING PLAN

REVISIONS		
No.	Description	Date
1	Addendum 1	3/7/2025

DRAWN BY:	SRL
CHECKED BY:	JLT
DATE:	April 26, 2024

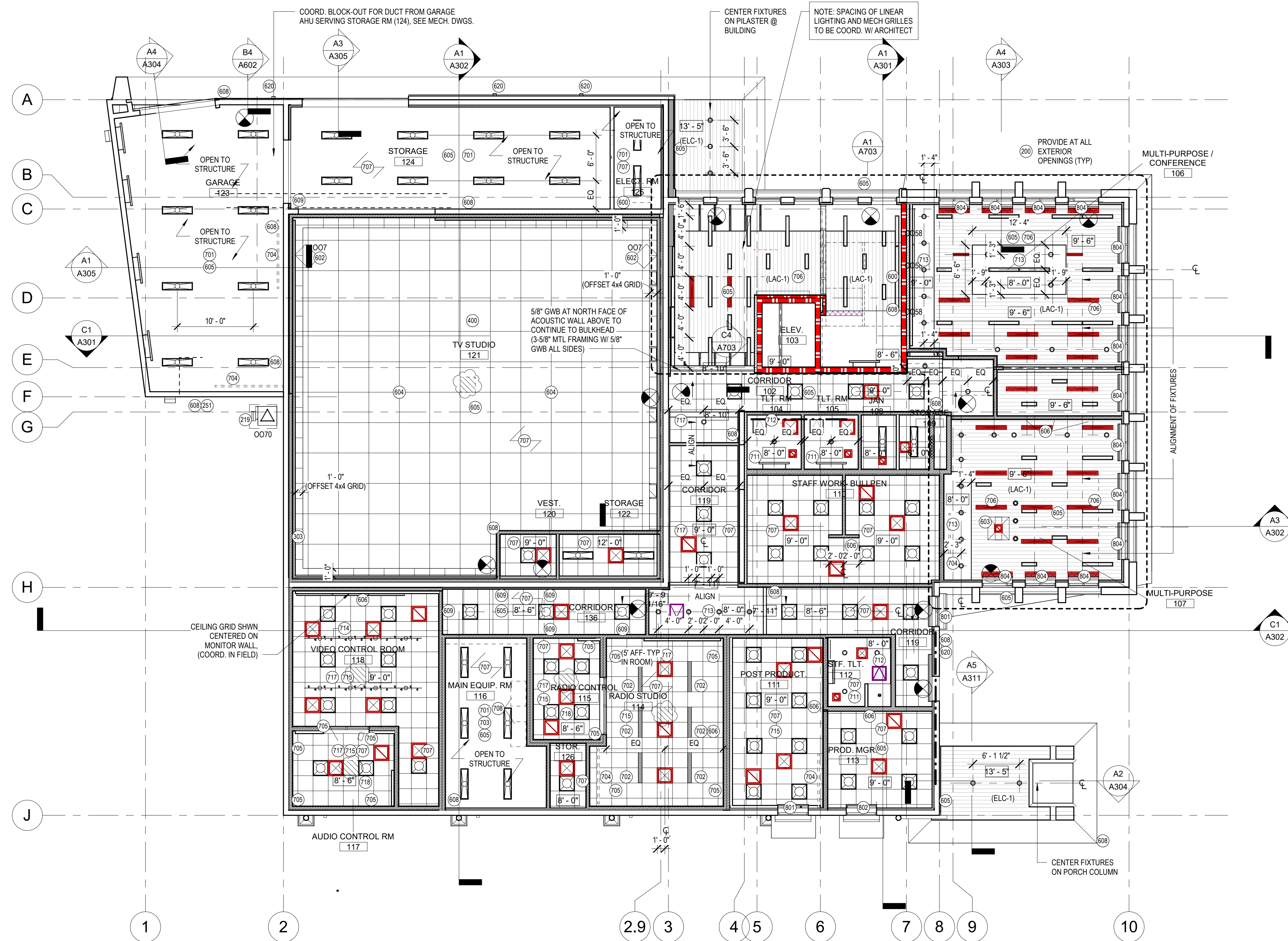
NOVUS JOB NUMBER

510-21-1

SHEET NUMBER

A701

CONSTRUCTION DOCUMENTS



A1 1ST FLOOR - REFLECTED CEILING PLAN
A701 1/8" = 1'-0"