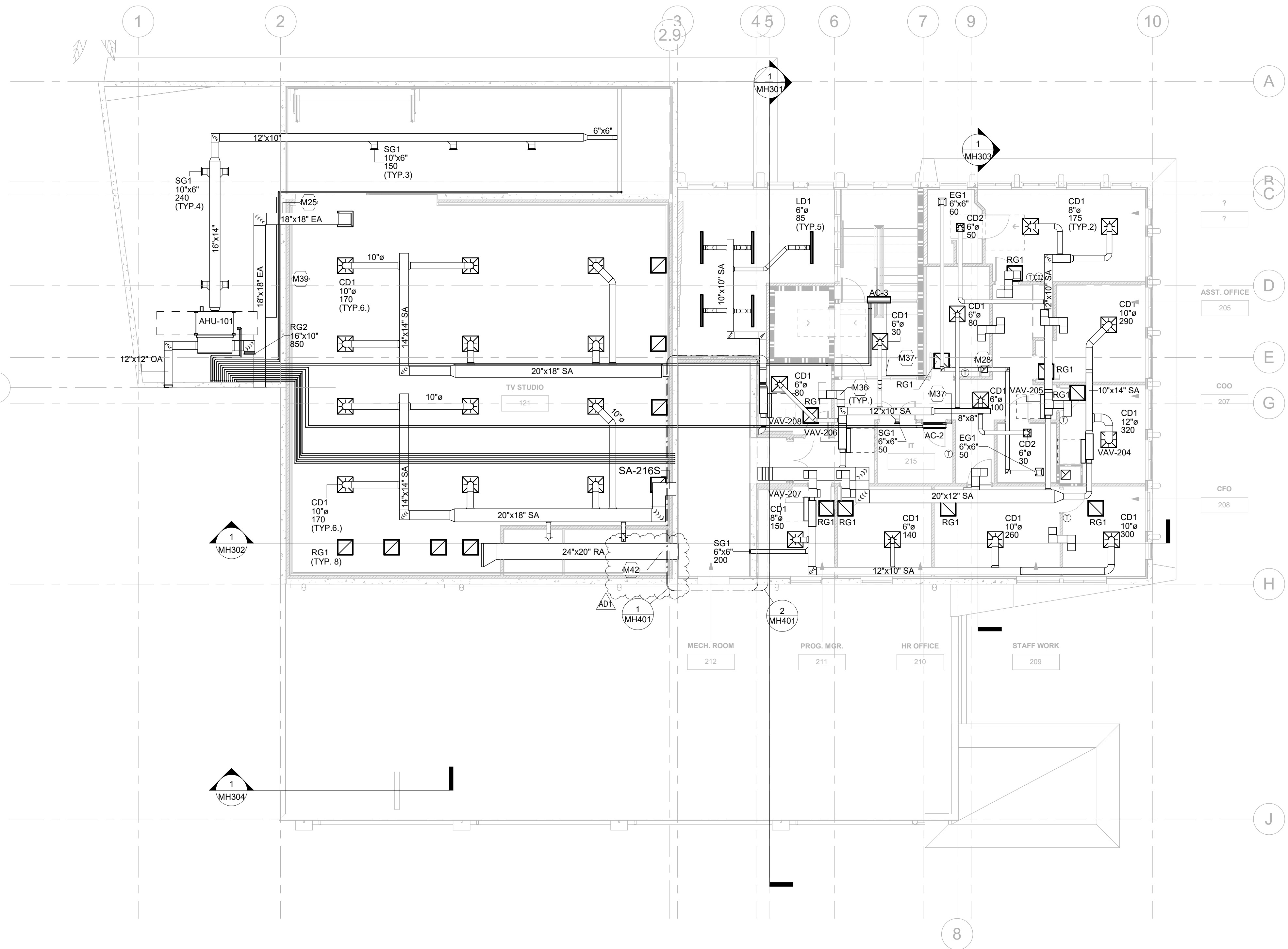


ALL INFORMATION CONTAINED HEREIN IS THE PROPERTY OF SPRINGLINE ARCHITECTS L.L.C. THE CONCEPTS, IDEAS, DESIGNS AND DETAILS AS SHOWN ON THE DOCUMENTS WERE CREATED, DEVELOPED, AND PRESENTED FOR USE ON THIS SPECIFIC PROJECT AND SHALL NOT BE REUSED FOR ANY PURPOSE WHATSOEVER WITHOUT THE WRITTEN CONSENT OF SPRINGLINE ARCHITECTS L.L.C. THE OWNER SHALL BE PERMITTED TO RETAIN COPIES FOR INFORMATION AND REFERENCE PURPOSES ONLY.



1 Second Floor - Mechanical
1/8" = 1'-0"

Keynote Legend	
Key Value	Keynote Text
M25	DUCTWORK IS SERVING THE INERT GAS SYSTEM AND IS TO BE LINED FOR ACOUSTICS. SEE SCHEDULE FOR TERMINAL IN ROOM AND LOUVER ON EXTERIOR WALL. TYP.
M28	10"X10" EXHAUST DUCT COMING UP FROM FIRST FLOOR BATHROOMS TO SECOND FLOOR.
M36	PROVIDE 16"X16" TRANSFER AIR Z DUCT SEE MECHANICAL DETAIL 5/MH502.
M37	PROVIDE 3/4" CONDENSATE DRAIN TO FIRST FLOOR JANITOR CLOSET SINK.
M39	PROVIDE 3/4" CONDENSATE DRAIN LINE FROM MECHANICAL UNIT ALONG THE WALL TO DISCHARGE IN SINK ON GROUND FLOOR IN GARAGE.
M42	PROVIDE SMOKE DAMPER AT TRANSFER DUCT IN THE WALL TO OPERATE DURING THE CHEMICAL AGENT RELEASE. INTERLOCK THE SMOKE DAMPERS WITH CHEMICAL AGENT SYSTEM AS NEEDED.



WTJX Radio Station
Haypiece Hill, Parcels 158A and 158 Rem
Submarine base, St. Thomas USVI

MECHANICAL SECOND FLOOR PLAN

REVISIONS:		
No.	Description	Date
AD1	Addendum 1	3/7/2025

DRAWN BY: _____ Author
CHECKED BY: _____ Checker
DATE: April 26, 2024

NOVUS JOB NUMBER
201

SHEET NUMBER
MH102

CONSTRUCTION DOCUMENTS