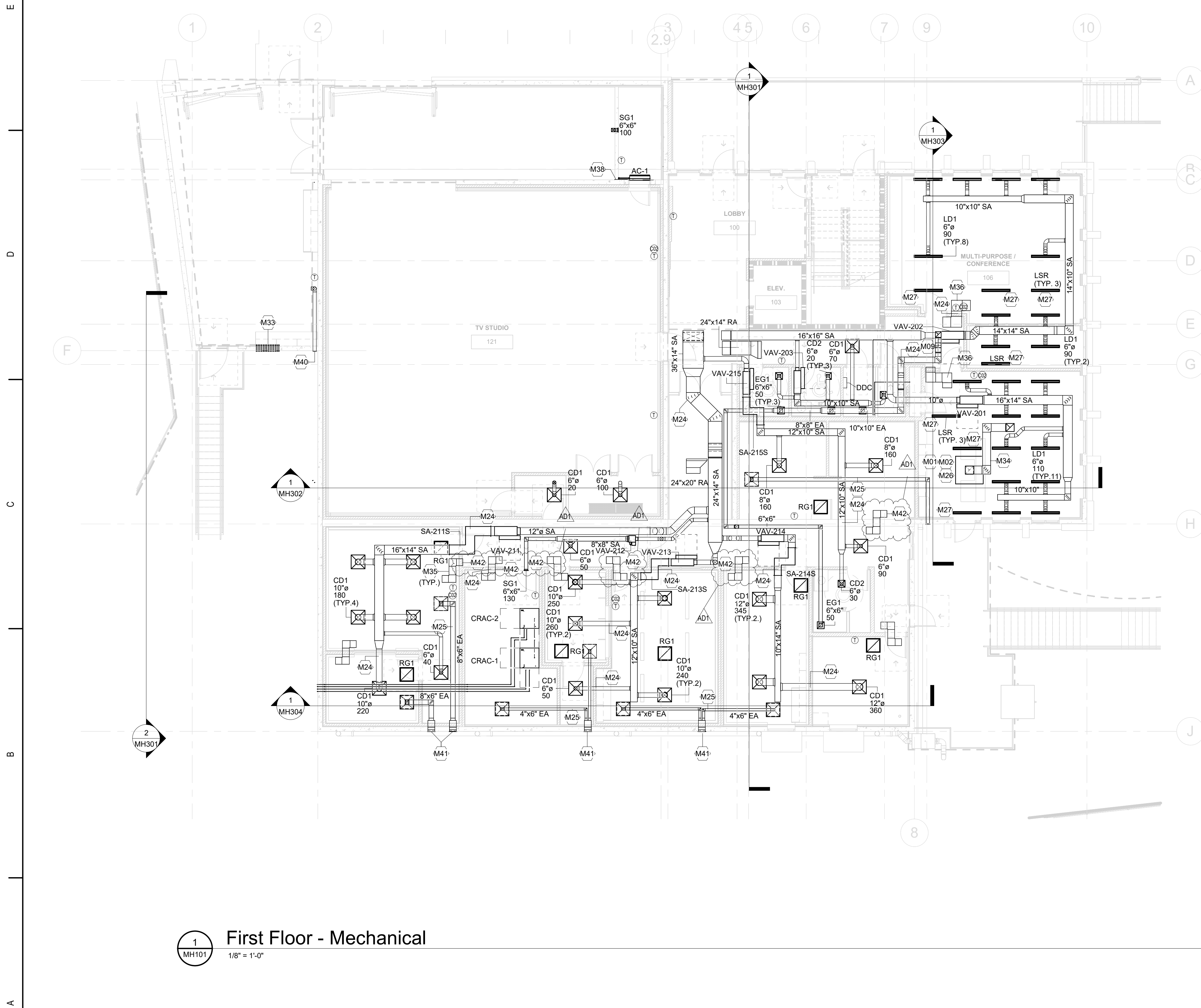


ALL INFORMATION CONTAINED HEREIN IS THE PROPERTY OF SPRINGLINE ARCHITECTS L.L.C. THE CONCEPTS, IDEAS, DESIGNS AND DETAILS AS SHOWN ON THE DOCUMENTS WERE CREATED, DEVELOPED, AND PRESENTED FOR USE ON THIS SPECIFIC PROJECT AND SHALL NOT BE REUSED FOR ANY PURPOSE WHATSOEVER WITHOUT THE WRITTEN CONSENT OF SPRINGLINE ARCHITECTS L.L.C. THE OWNER SHALL BE PERMITTED TO RETAIN COPIES FOR INFORMATION AND REFERENCE PURPOSES ONLY.



1  
MH101  
1/8" = 1'-0"  
First Floor - Mechanical

Keynote Legend	
Key Value	Keynote Text
M01	PROVIDE UL-LISTED CLEANOUT (AS DESCRIBED IN KEYED NOTE M02 ON THIS SHEET ON BACK SIDE OF THE DUCT. COORDINATE 1-HR SHAFT ENCLOSURE ACCESS DOOR WITH DIVISION-1.
M02	PROVIDE CLEANOUTS PER IMC-2021 SECTION 506.3.8 AND 506.3.9. LOCATE CLEANOUTS ON HORIZONTAL SECTIONS OF DUCTS AS SHOWN ON PLAN AND SPACE THEM NOT MORE THAN 20 FEET APART OR AS SHOWN ON PLAN (WHICHEVER IS LESS). THE CLEANOUTS SHALL BE LOCATED ON THE SIDE OF THE DUCT WITH THE OPENING NOT LESS THAN 1.5 INCHES ABOVE THE BOTTOM OF THE DUCT, AND NOT LESS THAN 1 INCH BELOW THE TOP OF THE DUCT. THE OPENING MINIMUM DIMENSIONS SHALL BE 12 INCHES ON EACH SIDE. CLEANOUT SHALL BE UL LISTED FOR THE APPLICATION. WHERE SIDE INSTALLATION IS DIFFICULT, PROVIDE CLEANOUTS AT THE BOTTOM OF THE DUCT. THE CLEANOUT OPENING TO PROVIDE DAMMING AROUND THE OPENING AND PROVIDED WITH GASKETING TO PRECLUDE GREASE LEAKAGE.
M09	10"x10" EXHAUST DUCT GOING UP TO EF-1 TO SECOND FLOOR.
M24	DUCT WORK PENETRATES ACOUSTICALLY SENSITIVE ROOM, AND NEEDS TO BE SEALED PER THE ACOUSTIC REPORT.
M25	DUCTWORK IS SERVING THE INERT GAS SYSTEM AND IS TO BE LINED FOR ACOUSTICS. SEE SCHEDULE FOR TERMINAL IN ROOM AND LOUVER ON EXTERIOR WALL. TYP.
M26	WHERE CLEANOUT ON GREASE LEADEN DUCT HAPPENS TO BE BEHIND A MASONRY 1-HR RATED SHAFT ENCLOSURE, COORDINATE THE ACCESS DOOR IN THE SHAFT WITH DIVISION-1.
M27	LINEAR SLOT RETURN GRILLE PROVIDED WITH PLENUM.
M33	SEE CONTINUATION OF REFRIGERANT PIPING ON SHEET MH102.
M34	PROVIDE 2-HR FIRE RETARDANT BLANKET INSULATION ON GREASE DUCTWORK ABOVE CEILING AND IN THE RATED CHASE.
M35	PROVIDE 12"x12" TRANSFER AIR Z DUCT SEE MECHANICAL DETAIL 5/MH502.
M36	PROVIDE 16"x16" TRANSFER AIR Z DUCT SEE MECHANICAL DETAIL 5/MH502.
M38	PROVIDE 3/4" CONDENSATE DRAIN LINE TO HUB DRAIN IN STORAGE. SEE PLUMBING FOR DRAIN LOCATION.
M40	4"Ø ALUMINUM DRYER VENT, ROUTE TO EXTERIOR WALL WITH 4" WALL CAP WITH INTEGRAL BACKDRAFT DAMPER SIMILAR TO FAMCO DWVP. MAXIMUM EQUIVALENT LENGTH SHALL NOT EXCEED 30'.
M41	ALL LOUVERS FOR INERT GAS SYSTEM ARE TO BE SIZED AT 12"x12" AND PLENUM PROVIDED, REFER TO ARCH FOR LOUVER SPECS.
M42	PROVIDE SMOKE DAMPER AT TRANSFER DUCT IN THE WALL TO OPERATE DURING THE CHEMICAL AGENT RELEASE. INTERLOCK THE SMOKE DAMPERS WITH CHEMICAL AGENT SYSTEM AS NEEDED.



WTJX Radio Station  
Haypiece Hill, Parcels 158A and 158 Rem  
Submarine base, St. Thomas USVI

MECHANICAL FIRST FLOOR PLAN

REVISIONS		
No.	Description	Date
AD1	Addendum 1	3/7/2025

DRAWN BY: Author  
CHECKED BY: Checker  
DATE: April 26, 2024

NOVUS JOB NUMBER  
201

SHEET NUMBER  
MH101

CONSTRUCTION DOCUMENTS