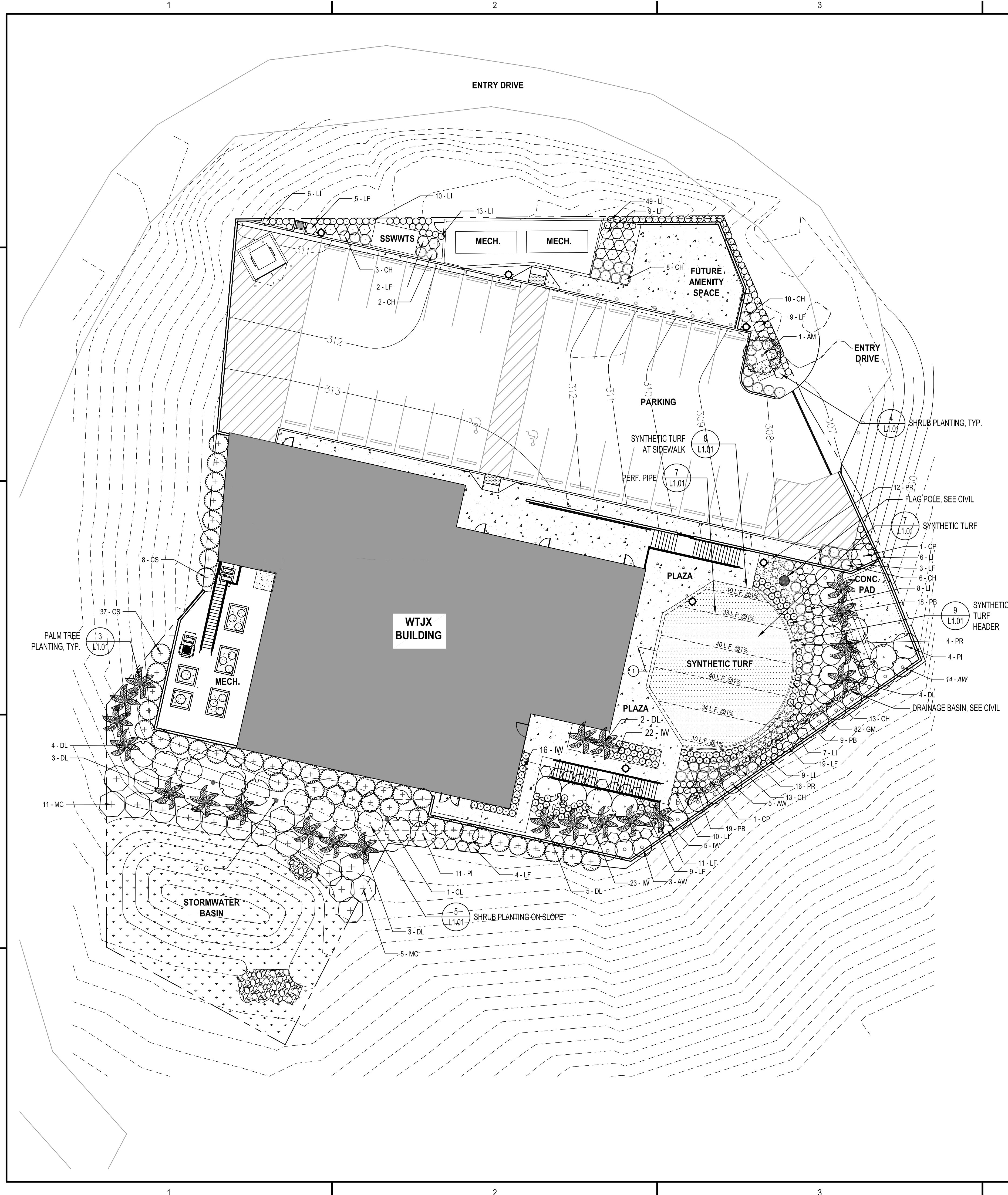


ALL INFORMATION CONTAINED HEREIN IS THE PROPERTY OF SPRINGLINE ARCHITECTS L.L.C. THE CONCEPTS, IDEAS, DESIGNS AND DETAILS AS SHOWN ON THE DOCUMENTS WERE CREATED, DEVELOPED, AND PRESENTED FOR USE ON THIS SPECIFIC PROJECT AND SHALL NOT BE REUSED FOR ANY PURPOSE WHATSOEVER WITHOUT THE WRITTEN CONSENT OF SPRINGLINE ARCHITECTS L.L.C. THE OWNER SHALL BE PERMITTED TO RETAIN COPIES FOR INFORMATION AND REFERENCE PURPOSES ONLY.



**PLANT SCHEDULE**

SYMBOL	CODE	BOTANICAL / COMMON NAME	SIZE	CONTAINER	CANOPY	QTY	DETAIL
<b>TREES</b>							
	AM	ANNONA MURICATA / SOURSOP	2" CAL.	B&B	12'	1	1/2, L1.01
	CP	CARICA PAPAYA / PAPAYA	2" CAL.	B&B	8'	2	1/2, L1.01
	CL	CHILOPSIS LINEARIS / DESERT WILLOW	2" CAL.	B&B	20'	3	1/2, L1.01
	DL	DYPISIS LUTESCENS / ARECA PALM	15 GAL.	POT	10'	21	3, L1.01
SYMBOL	CODE	BOTANICAL / COMMON NAME	SIZE	CONTAINER	SPACING	QTY	DETAIL
<b>SHRUBS</b>							
	AW	ACALYPHA WILKESIANA / WILKES' COPPERLEAF	2 GAL.	POT	72" o.c.	22	4/5, L1.01
	CH	CHRYSOBALANUS ICACO 'HORIZONTALIS' / HORIZONTAL COCO PLUM	2 GAL.	POT	42" o.c.	55	4/5, L1.01
	CS	CLUSIA GUTTIFERA / SMALL LEAF CLUSIA	2 GAL.	POT	72" o.c.	45	4/5, L1.01
	IW	IXORA TAIWANENSIS 'RED DWARF' / RED DWARF IXORA	1 GAL.	POT	24" o.c.	66	4/5, L1.01
	LI	LANTANA INVOLUCRATA / BUTTONSAGE	2 GAL.	POT	24" o.c.	119	4/5, L1.01
	LF	LEUCOPHYLLUM FRUTESCENS / TEXAS SAGE	2 GAL.	POT	42" o.c.	73	4/5, L1.01
	MC	MYRICA CERIFERA / WAX MYRTLE	2 GAL.	POT	96" o.c.	16	4/5, L1.01
	PR	PENNISETUM SETACEUM 'RUBRUM' / PURPLE FOUNTAIN GRASS	1 GAL.	POT	36" o.c.	32	4/5, L1.01
	PB	PHILODENDRON X 'BURLE MARX' / BURLE MARX PHILODENDRON	1 GAL.	POT	24" o.c.	46	4/5, L1.01
	PI	PLUMBAGO AURICULATA 'IMPERIAL BLUE' / IMPERIAL BLUE PLUMBAGO	2 GAL.	POT	96" o.c.	19	4/5, L1.01
CODE	BOTANICAL / COMMON NAME	SIZE	CONTAINER	SPACING	QTY	DETAIL	
<b>GROUND COVERS</b>							
	GM	GLANDULARIA MARITIMA / COASTAL MOCK VERVAIN	4"	4" POT	12" o.c.	83	4, L1.01
		SYNTHETIC TURF, SEE SPECS				1,765 SF	7, L1.01
		STORMWATER SEED, SEE SPECS				3,149 SF	

**PLANTING NOTES**

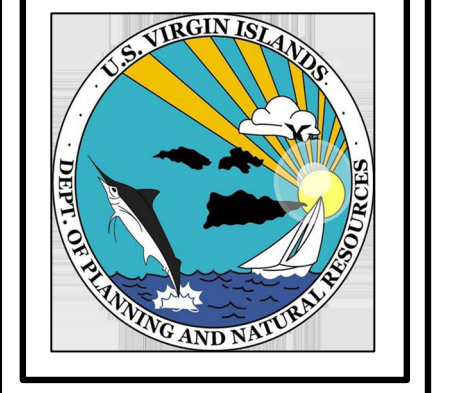
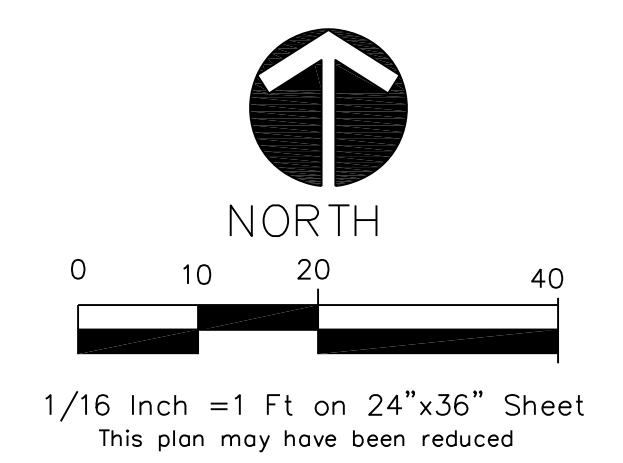
- PLANTING AREAS TO BE SUFFICIENTLY CLEANED OF ALL CONSTRUCTION MATERIALS, INCLUDING IMPORTED ROCK, TO THE SATISFACTION OF THE LANDSCAPE ARCHITECT BEFORE BEGINNING ANY SITE WORK.
- IDENTIFY ALL PLANTING AREAS IN FIELD WITH WHITE FIELD-MARKING CHALK OR APPROVED EQUAL. PLANTING BEDS TO BE ADJUSTED AND APPROVED BY LANDSCAPE ARCHITECT PRIOR TO PLANT LOCATION.
- THE LANDSCAPE ARCHITECT WILL APPROVE INDIVIDUAL PLANT MATERIAL AND LOCATION OF PLANT MATERIAL PRIOR TO INSTALLATION. REFER TO SPECIFICATIONS FOR PROCEDURE.
- SHRUBS AND GROUND COVER TO BE PLANTED A MINIMUM OF ONE HALF THEIR ON CENTER SPACING AWAY FROM PAVEMENT EDGES; UNLESS OTHERWISE NOTED.
- PLANT QUANTITIES INDICATED ARE FOR THE CONVENIENCE OF THE CONTRACTOR ONLY. CONTRACTOR IS RESPONSIBLE FOR PROVIDING PLANTS IN QUANTITIES AND LOCATIONS SHOWN ON DRAWINGS.
- CONTRACTOR IS REQUIRED TO IRRIGATE ALL PLANTINGS FOR THE ONE-YEAR ESTABLISHMENT PERIOD BY MEANS OF A WATER TRUCK, OR SIM., SEE SPECIFICATION SECTION 329500 ESTABLISHMENT MAINTENANCE. POWER AND WATER WILL NOT BE PROVIDED BY OWNER.
- ALL LANDSCAPE AREAS SHALL RECEIVE 3" OF MULCH, SEE SPECIFICATIONS.
- ALL AREAS HAVING GREATER THAN, OR EQUAL TO, 3:1 SLOPES SHALL RECEIVE EROSION CONTROL MATTING, SEE SPECS.
- ALL LANDSCAPED AREAS SHALL RECEIVE IMPORTED OR AMENDED TOPSOIL PER SPECIFICATION SECTION 329113 SOIL PREPARATION.

**DEDUCTIVE ALTERNATE #1**

- CONTRACTOR SHALL ESTIMATE SEEDING ALL LANDSCAPED AREAS, LESS THE SYNTHETIC TURF LAWN, WITH PASPALUM GRASS SEED, IN LIEU OF TREES, SHRUBS AND GROUND COVER. CONTRACTOR SHALL ESTABLISH, IRRIGATE AND MAINTAIN THE LAWN FOR THE ONE-YEAR ESTABLISHMENT PERIOD AS DESCRIBED IN SPECIFICATION SECTION 329500 ESTABLISHMENT MAINTENANCE.

**KEY NOTES + LEGEND**

- TIE TO STORM
- 4" PERFORATED DRAIN PIPE



**WTJX Broadcasting Facility**  
 Haypiece Hill, Parcels 158A and 158 Rem  
 Submarine base, St. Thomas USVI

**PLANTING PLAN**

REVISIONS:

No.	Description	Date

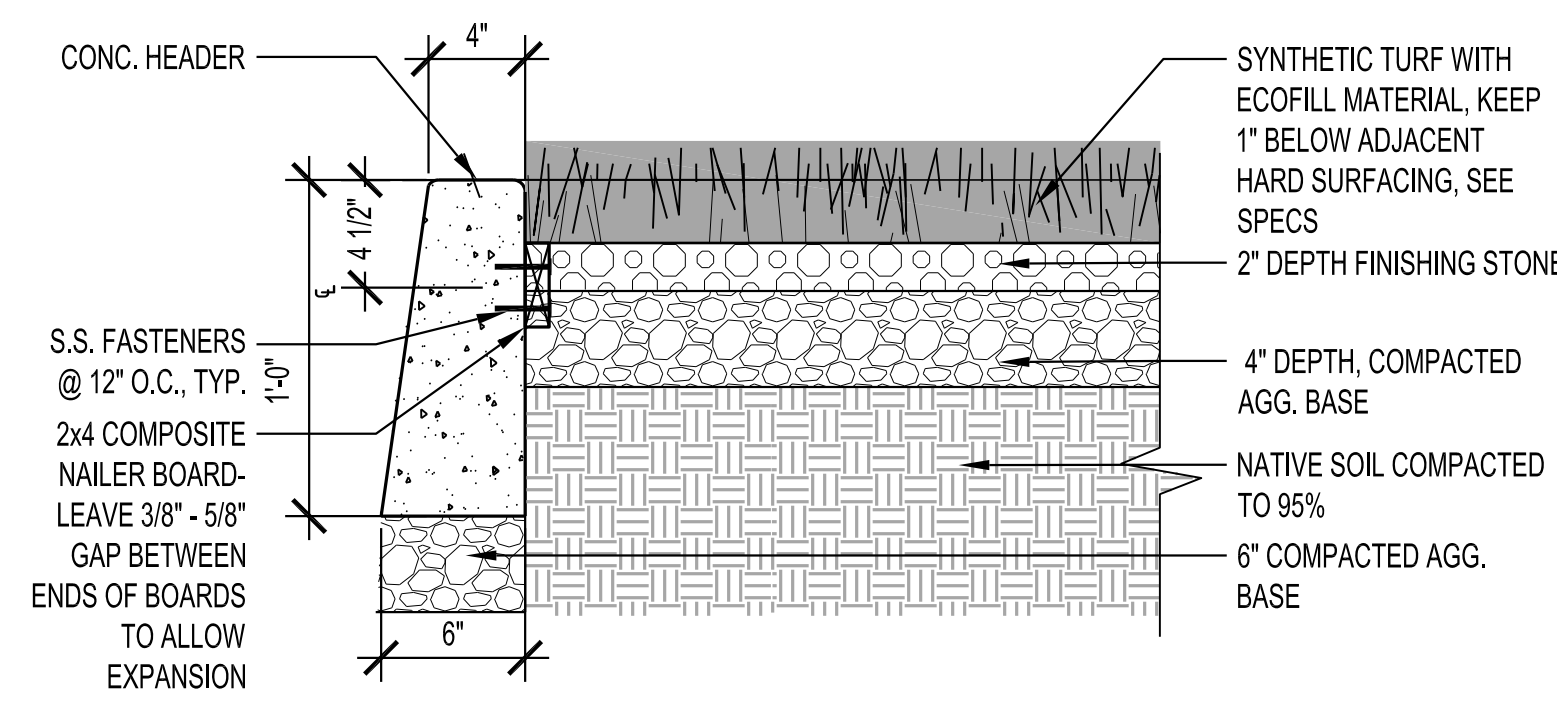
DRAWN BY: GS  
 CHECKED BY: CJ  
 DATE: April 26, 2024

NOVUS JOB NUMBER  
 510-21-1

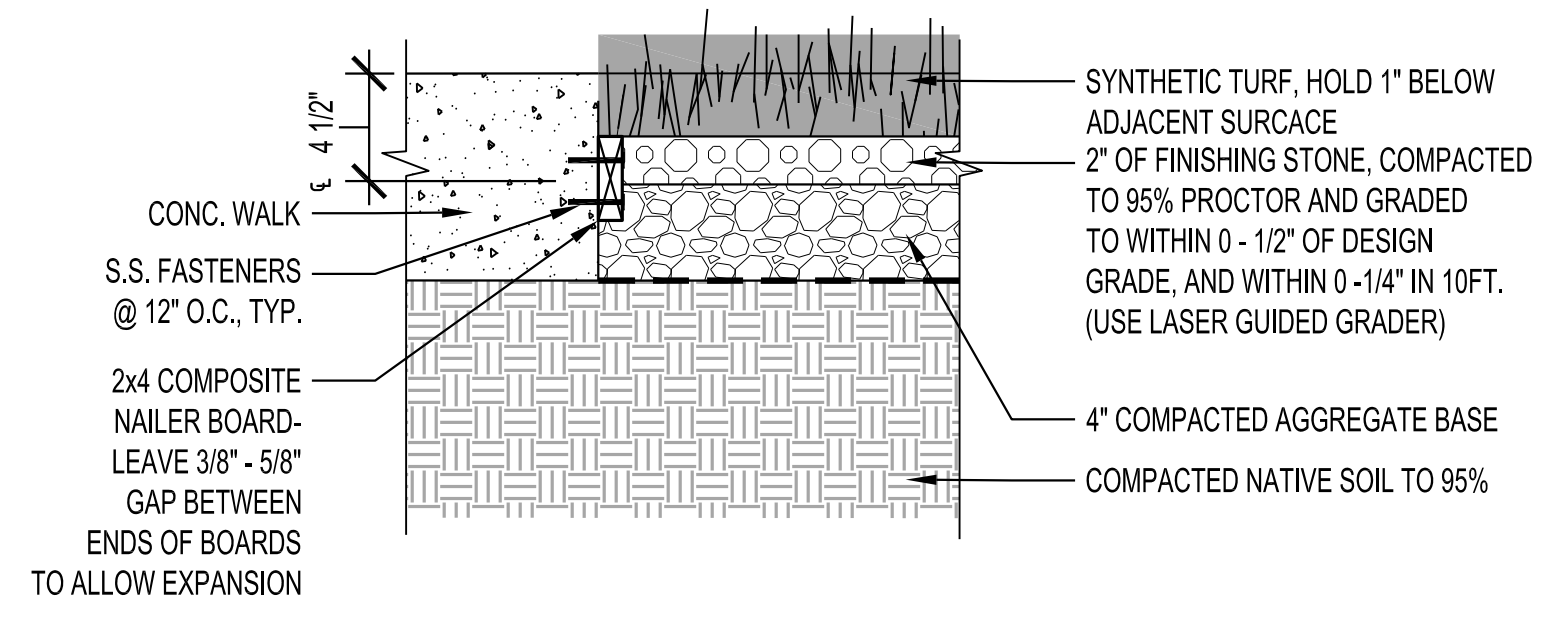
SHEET NUMBER  
**L1.00**

CONSTRUCTION DOCUMENTS

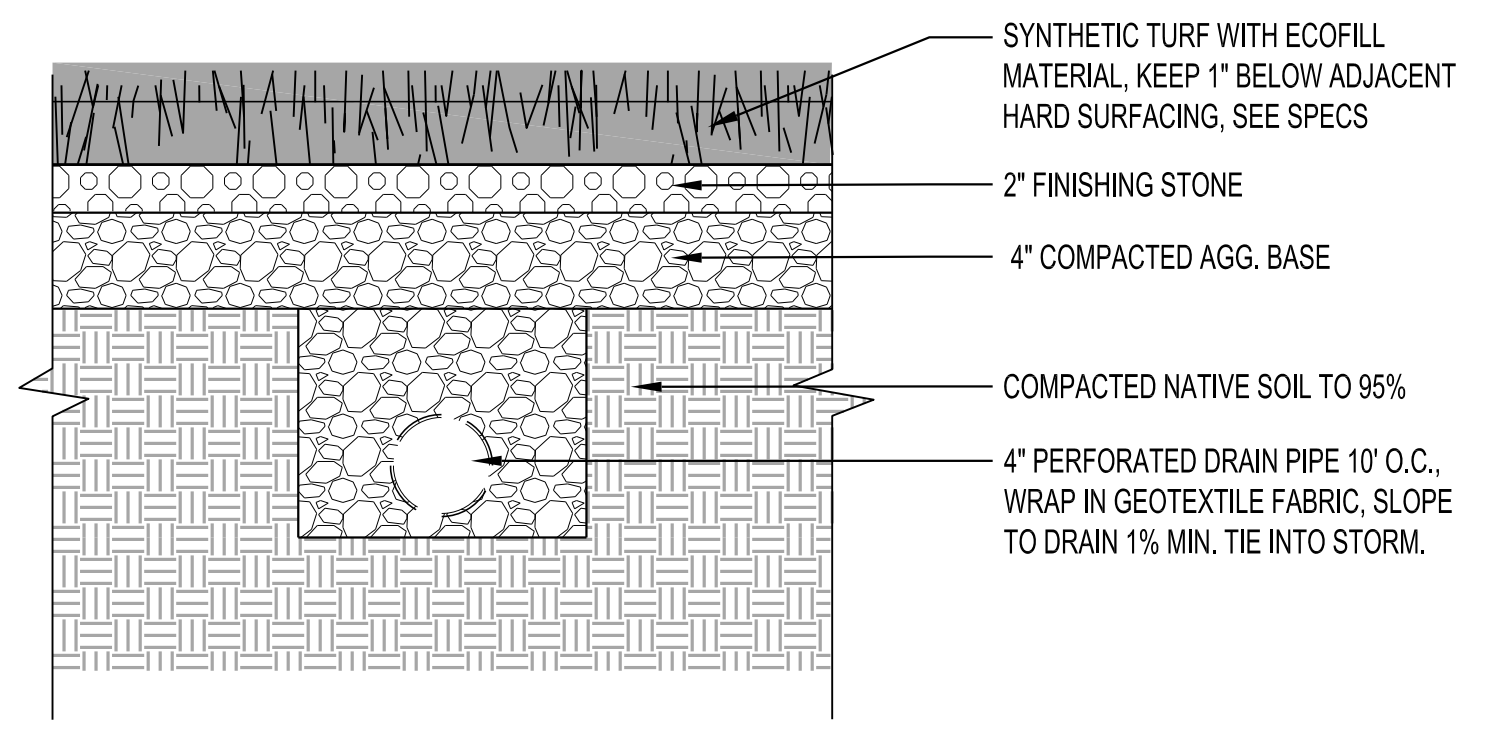
ALL INFORMATION CONTAINED HEREIN IS THE PROPERTY OF SPRINGLINE ARCHITECTS L.L.C. THE CONCEPTS, IDEAS, DESIGNS AND DETAILS AS SHOWN ON THE DOCUMENTS WERE CREATED, DEVELOPED, AND PRESENTED FOR USE ON THIS SPECIFIC PROJECT AND SHALL NOT BE REUSED FOR ANY PURPOSE WHATSOEVER WITHOUT THE WRITTEN CONSENT OF SPRINGLINE ARCHITECTS L.L.C. THE OWNER SHALL BE PERMITTED TO RETAIN COPIES FOR INFORMATION AND REFERENCE PURPOSES ONLY.



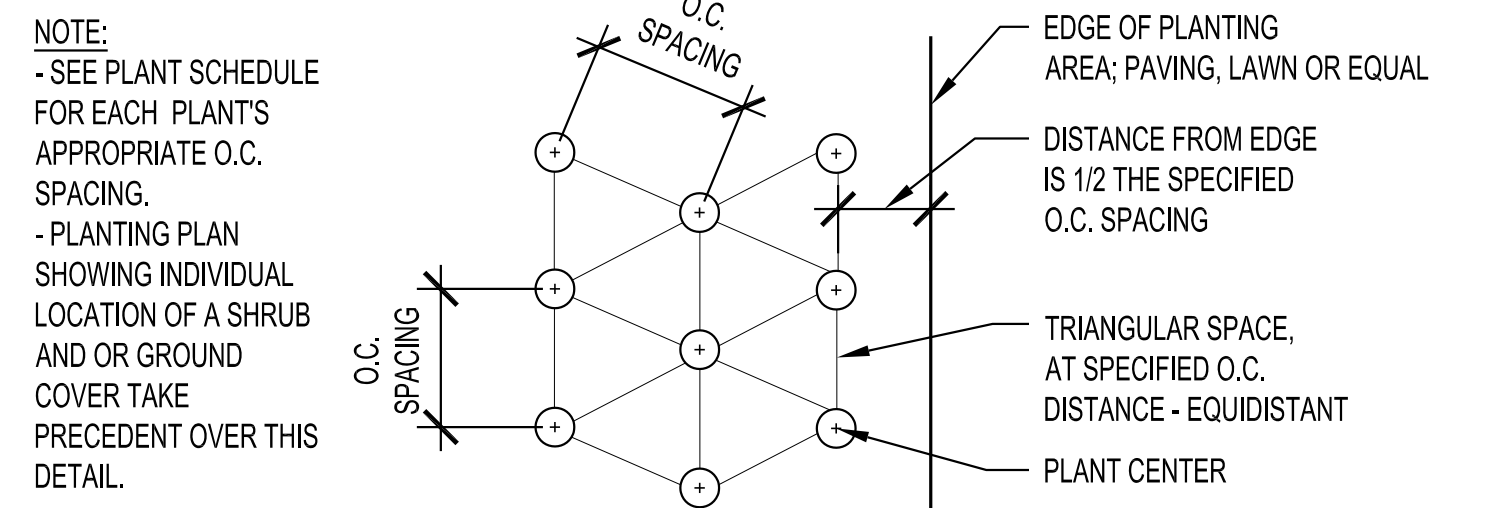
**9 SYNTHETIC TURF HEADER**  
SCALE: 1-1/2" = 1'-0" SECTION



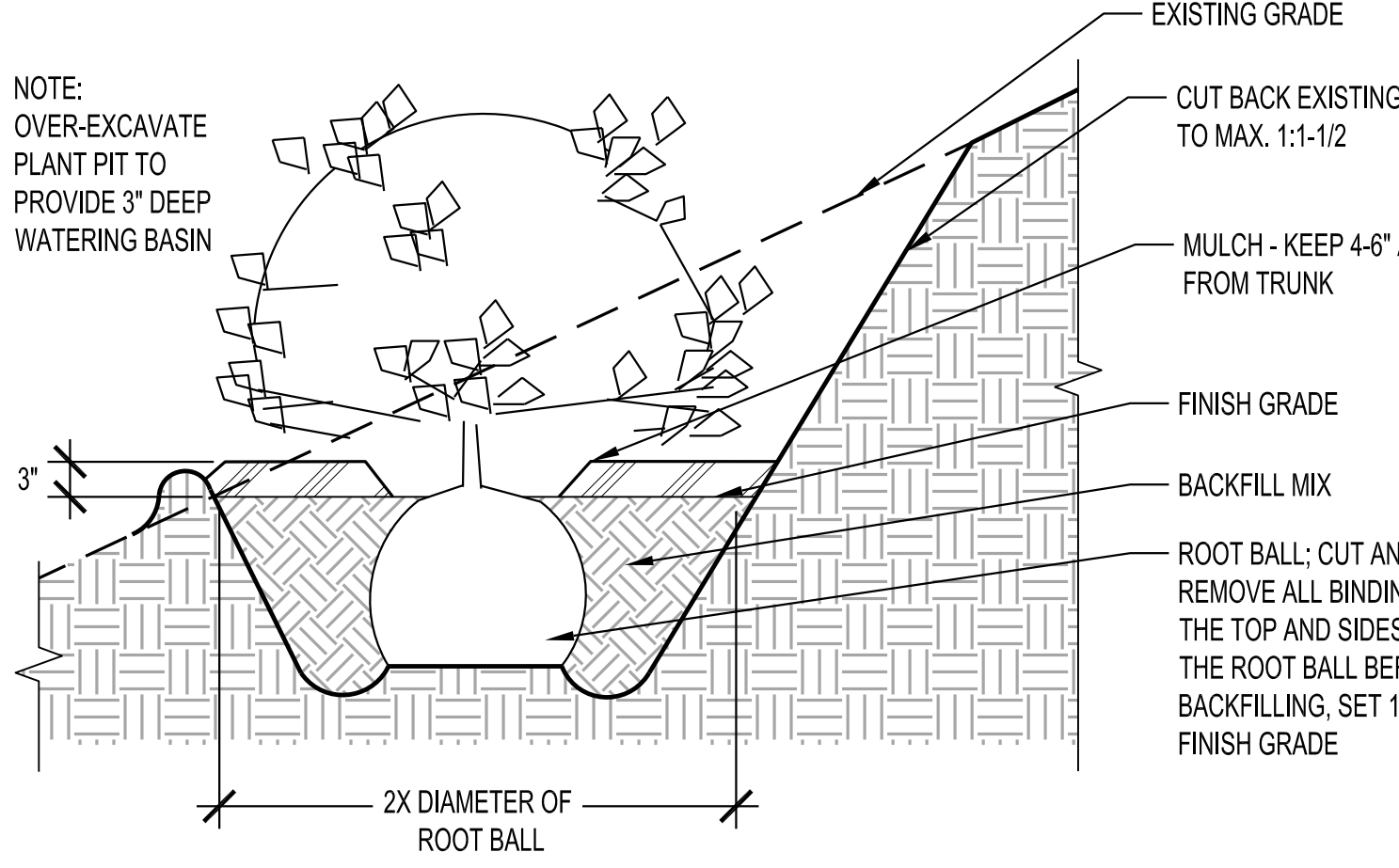
**8 SYNTHETIC TURF AT SIDEWALK**  
SCALE: 1-1/2" = 1'-0" SECTION



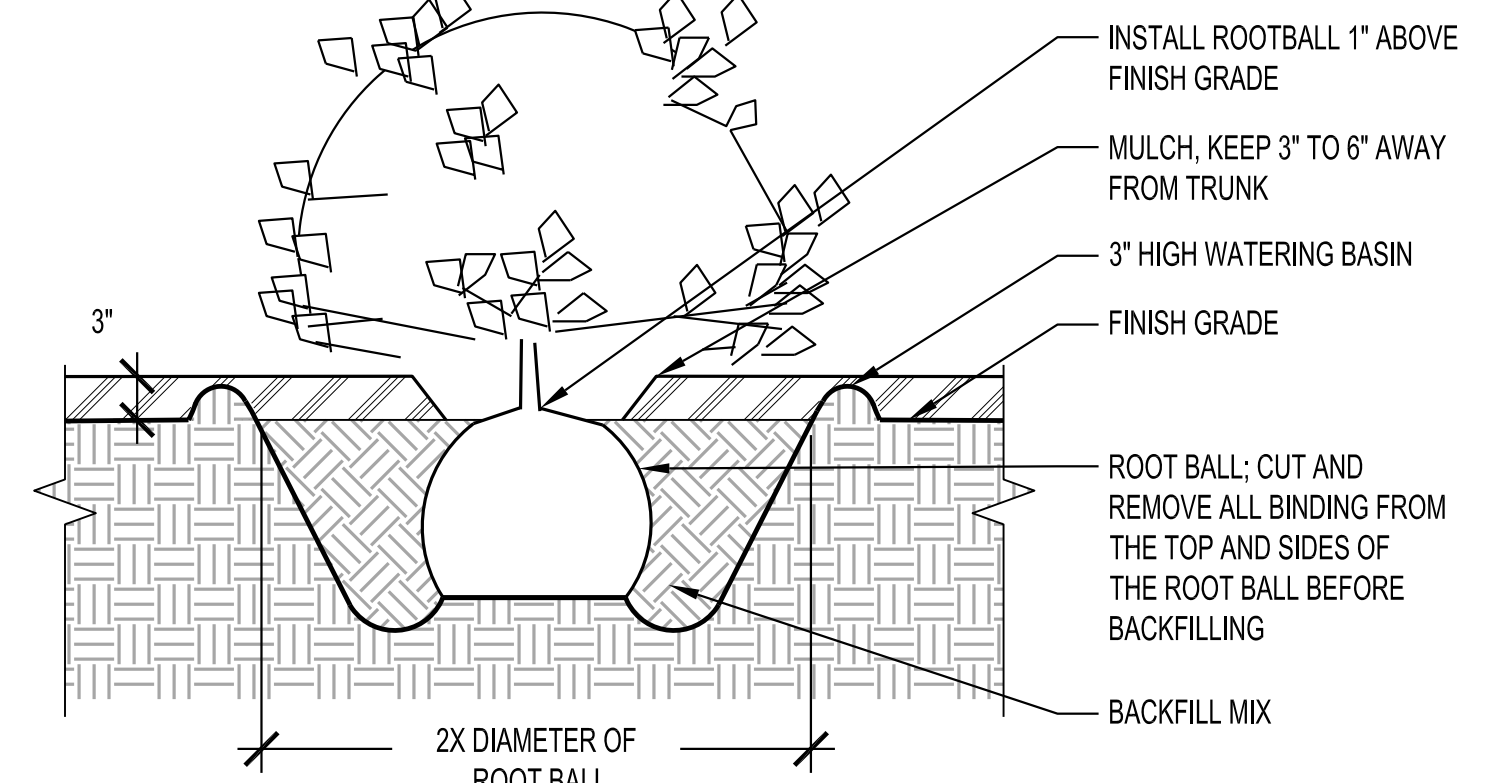
**7 SYNTHETIC TURF**  
SCALE: 1-1/2" = 1'-0" SECTION



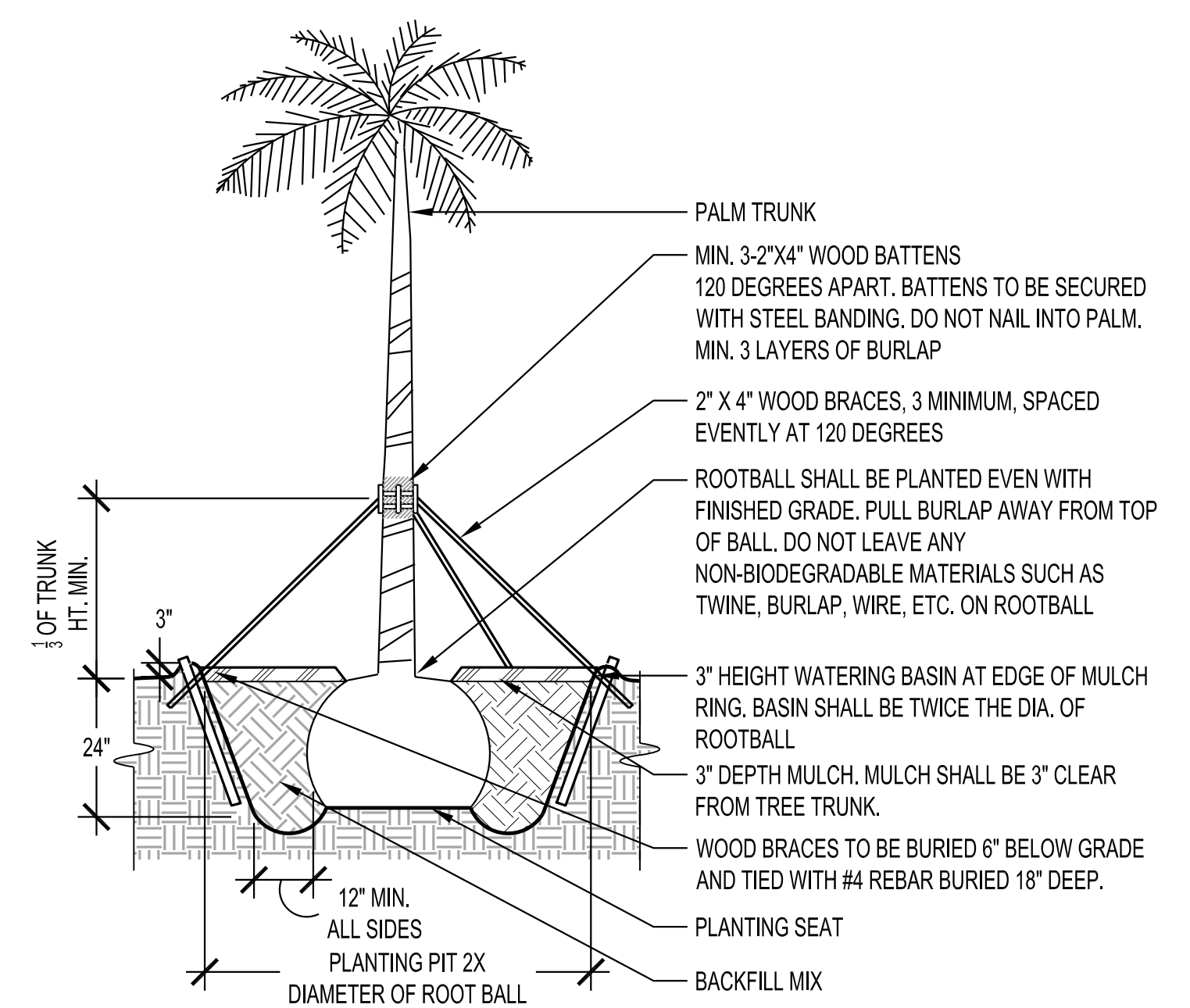
**6 SHRUB + GROUNDCOVER TRIANGULAR SPACING**  
SCALE: NOT TO SCALE SECTION



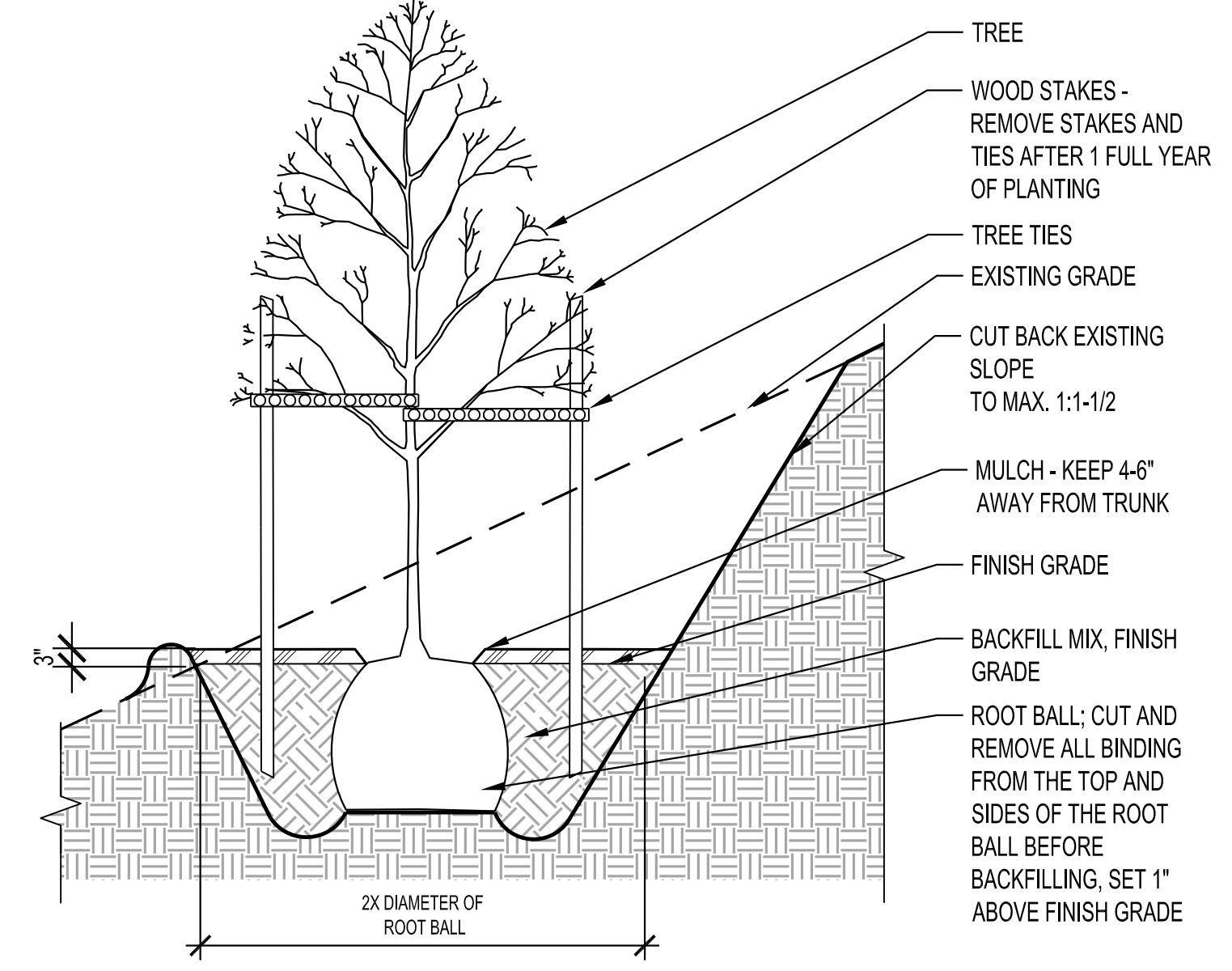
**5 SHRUB + GROUNDCOVER PLANTING ON SLOPE**  
SCALE: 3/4" = 1'-0" SECTION



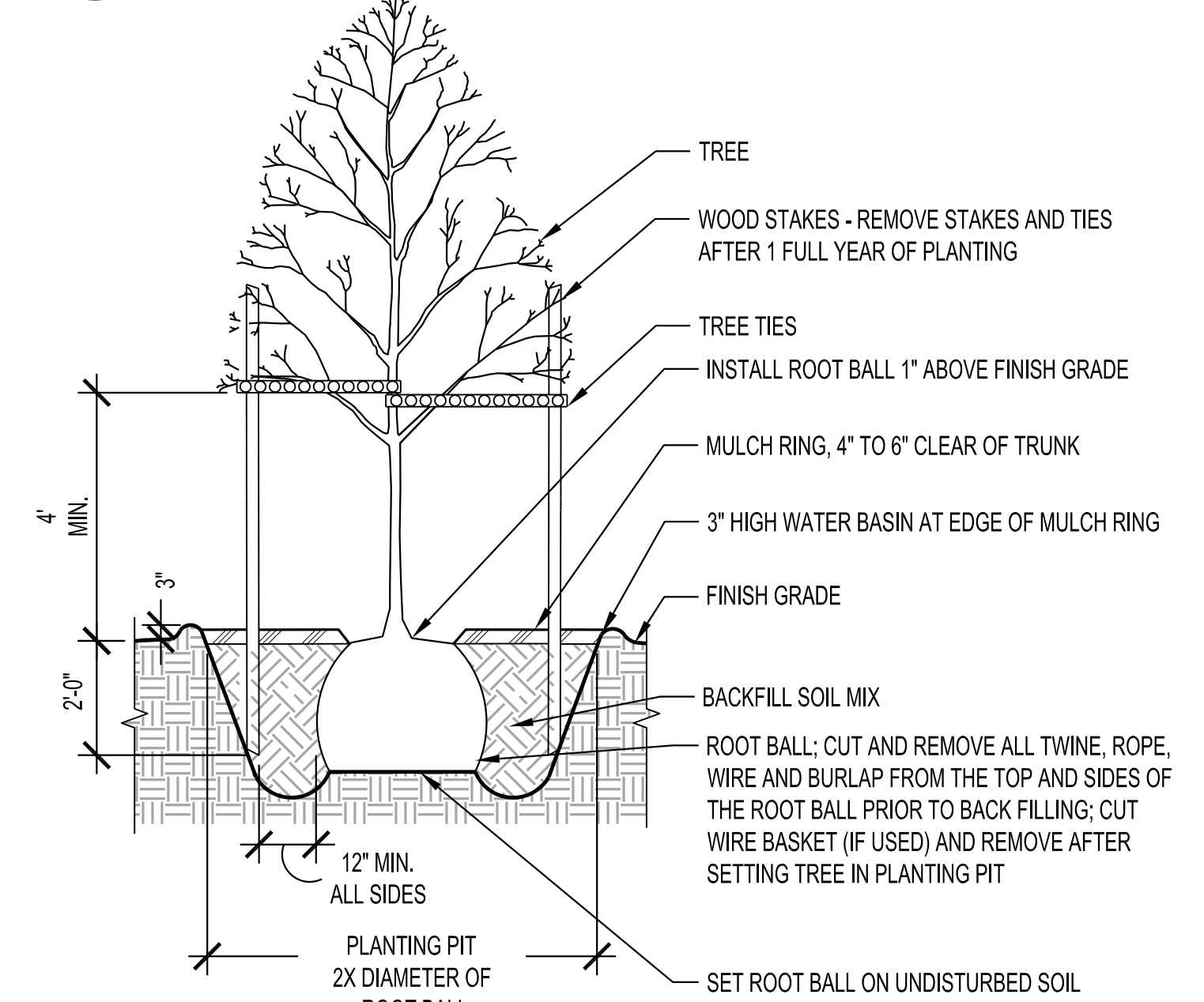
**4 SHRUB + GROUNDCOVER PLANTING**  
SCALE: 3/4" = 1'-0" SECTION



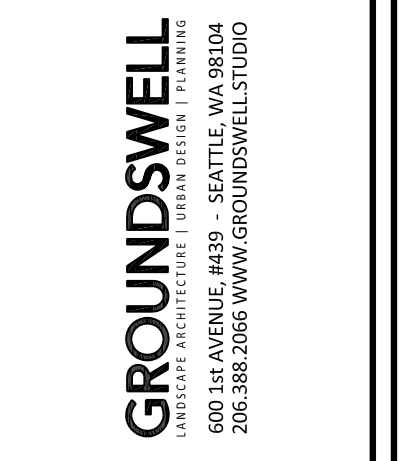
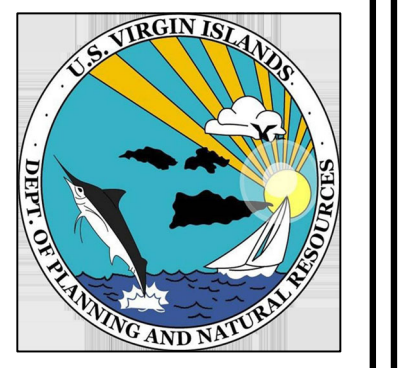
**3 PALM TREE PLANTING**  
SCALE: 3/8" = 1'-0" SECTION



**2 TREE PLANTING ON SLOPE**  
SCALE: 3/8" = 1'-0" SECTION



**1 DECIDUOUS TREE PLANTING**  
SCALE: 3/8" = 1'-0" SECTION



**WTJX Broadcasting Facility**  
Haypiece Hill, Parcels 158A and 158 Rem  
Submarine base, St. Thomas USVI

REVISIONS:

No.	Description	Date

DRAWN BY: GS  
CHECKED BY: CJ  
DATE: April 26, 2024  
NOVUS JOB NUMBER  
510-21-1

SHEET NUMBER  
**L1.01**

CONSTRUCTION DOCUMENTS