

# PUZZLES

MORNING



NOON AND



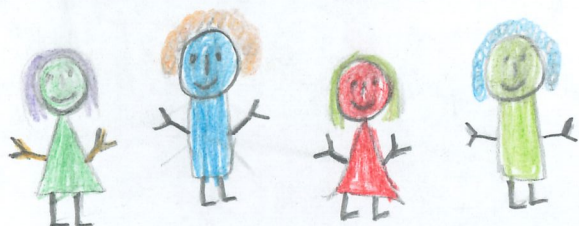
NIGHT



By: Rohan

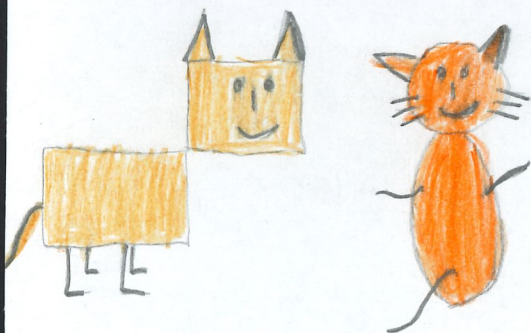
Grade 1

Berry the Dog and Tim the Cat attend Noble Collegiate Academy. It was almost the end of the school year and Ms. Muffin said, "Class, next week is our puzzle competition." Everyone was excited but also nervous because they knew that Ms. Muffin would not make it easy.



PUZZLE  
COMPETITION

NCA



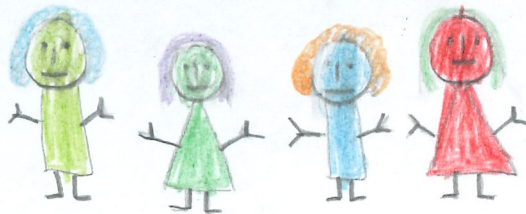
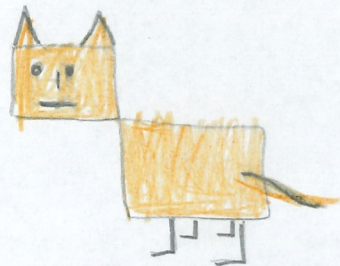


Berry and Tim were always competing for first place. Every morning, they practiced puzzles with their moms. During recess, they solved puzzles with their classmates. In the evening, their dads' showed them a few tricks too. Morning, noon and night, puzzles were all that they could think of!



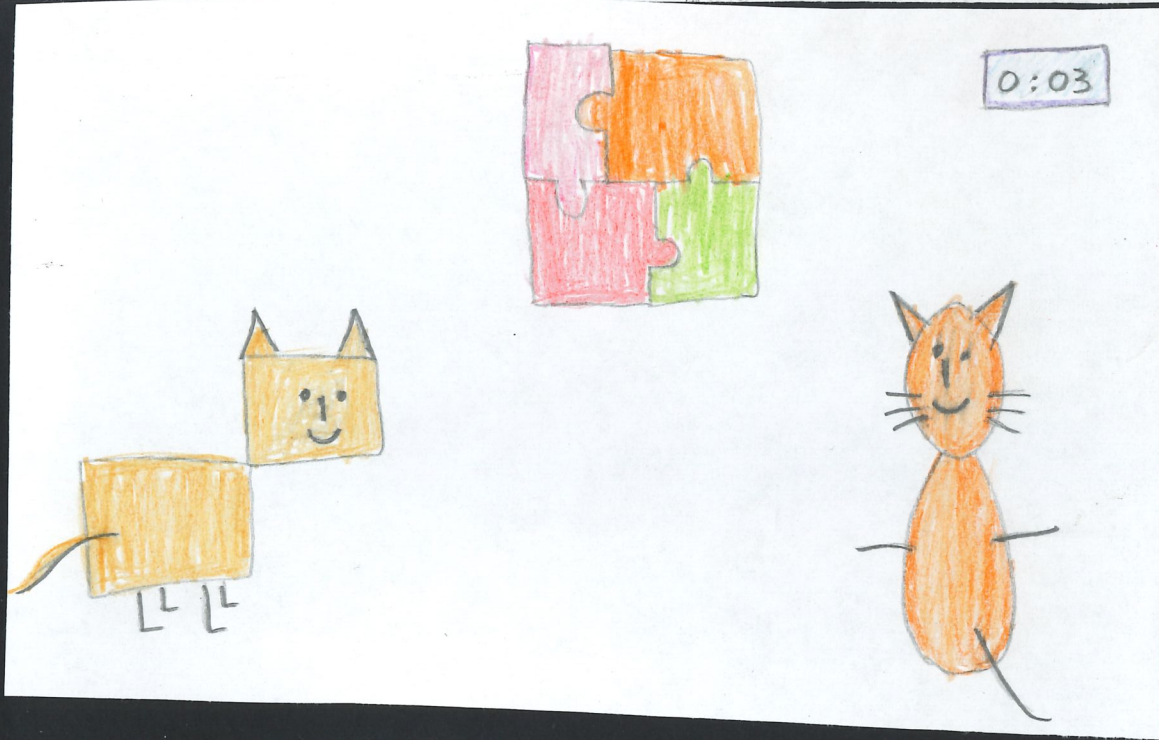


On competition day, everyone assembled at the playground where Ms. Muffin had set up the puzzle competition. There were five puzzle stations and they had to solve each one before moving onto the next one. One by one, the kids were eliminated until only Berry and Tim were left.





The last puzzle was very difficult and time was running out. Berry said to Tim, "Let's work together, two heads are better than one!" The countdown began and they solved the puzzle with three seconds to go!



Everyone clapped for them and Ms. Muffin was very pleased. First place!

