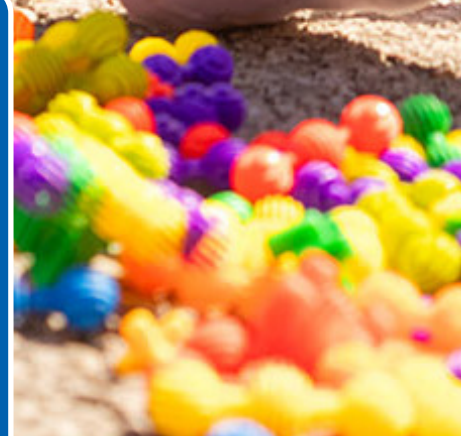




# Mental Well-Being

2025 IMPACT REPORT

[ninepbs.org](https://ninepbs.org) X f i y l d



## MENTAL WELL-BEING

Nine PBS's Mental Well-Being Initiative works with a network of trusted partners to support the day-to-day social, emotional, and cognitive needs of kids, caregivers, and educators in their lives through culturally relevant content and resources that promote courageous conversation.



**72% of public school teachers report that their schools offer either minimal programming to support educator mental health or no programming at all.**

Source: Merrimack College Teacher Survey, 2024



**Missouri ranks 32nd in access to mental health care.**

Source: Mental Health America, 2024



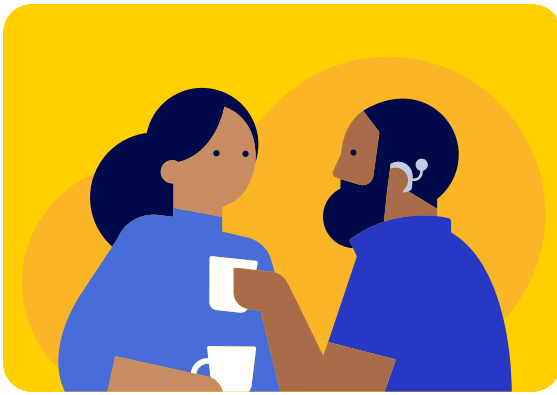
Across our region, neighbors are calling for stronger support for mental health and well-being—and Nine PBS is responding. Through community conversations and listening sessions, we learn directly what people need to thrive. Guided by these insights, we create trauma-informed, culturally responsive content that connects individuals and families to trusted regional resources.

Working alongside partners embedded in local neighborhoods, we deliver this content on air, online, and in person—extending its reach and deepening its impact. Continuous community feedback keeps us focused and accountable, ensuring our work meaningfully strengthens the mental well-being of our region.



**WHENEVER ONE'S FRAME OF REFERENCE CAN BE EXPANDED TO INCLUDE OTHERS' PERSPECTIVES, IT CAN ONLY HELP!**

*—2025 Nine PBS Community Survey*



IN 2025, NINE PBS HOSTED **10** CONVENINGS TO LEARN FROM MORE THAN **125** COMMUNITY MEMBERS AND LEADERS.

Over the course of these meetings, Nine PBS continued to gain a deeper understanding of the mental health and well-being landscape of our region.

IN RESPONSE TO WHAT WE LEARNED FROM THE CONVENINGS, NINE PBS CREATED MORE THAN **37** STORIES.

**6.7M**  
VIEWS ACROSS  
PLATFORMS

AIRING  
**12,000**  
TIMES

AS A RESULT OF ENGAGING WITH NINE PBS'S MENTAL WELL-BEING CONTENT OR RESOURCES:

**88%** AGREE THAT THE CONTENT AND RESOURCES ARE USEFUL.

**80%** GAINED A BETTER UNDERSTANDING OF WHAT MENTAL WELL-BEING MEANS.

SOURCE: *Nine PBS Community Survey, 2025*



THANK YOU FOR IMPROVING MY UNDERSTANDING  
[OF MENTAL WELL-BEING].

—2025 *Nine PBS Community Survey*



# Thank You to Our Vast Network of Trusted Community Partners.

Affinia Health Center  
Annie's Hope  
Behavioral Health Network of Greater St. Louis  
Behavioral Health Response  
Better Family Life  
Beyond Housing  
Big Brothers Big Sisters of Eastern Missouri  
BJC HealthCare  
Boys and Girls Clubs of Greater St. Louis  
The Center for Evidence-Based Youth Mental Health  
CHADS Coalition  
Chestnut Health System  
Christian Hospital Foundation  
Community Organizing and Family Issues (COFI)  
Community Reach  
Concordance  
Deaconess Foundation  
East Side Aligned  
East St. Louis Police Department | Comprehensive Behavioral Health Center | City of Cahokia Heights  
Easterseals Midwest  
Equal Shares Parenting  
Equip for Equality  
Ferguson Youth Initiative  
Foster and Adoptive Care Coalition  
Gateway Early Childhood Alliance  
Generate Health  
Girl Scouts of Eastern Missouri-Girl Scouts Beyond Bars  
Hill Top Family and Child Health Center  
I Define Me Movement  
Independence Center  
Jamaa Birth Village  
Jennings School District  
Lessie Bates Neighborhood Houses  
Lifewise  
Little Bit Foundation  
Lutheran Family and Children Services  
Mental Health America of Eastern Missouri  
Mission St. Louis  
Missouri Association for Infant and Early Childhood Mental Health  
Missouri Department of Elementary and Secondary Education (DESE)  
Missouri Foundation for Health  
Missouri Mental Health Foundation  
NAMI Southwestern Illinois  
National Alliance on Mental Health-Missouri, Illinois, St. Louis  
Normandy Schools Collaborative  
North County Incorporated  
Places for People  
Prevent+Ed  
Prison Performing Arts  
Project DEAMHI, Inc.  
Provident  
Queen of Peace  
Regional Response Team  
RESPOND  
Ritenour School District  
Saint Louis Counseling  
Saint Louis County Department of Public Health  
Saint Louis County Library  
Saint Louis Public Library  
Saint Louis Public School District  
Saint Louis Story Stitchers  
Saint Louis University | Transformative Workforce Academy  
The School District of University City  
She Had the Audacity  
SoulFisher Ministries  
SSM Health  
St. Louis Children's Hospital  
St. Louis County Children's Service Fund  
St. Louis County Library Tap in Center  
St. Louis Crisis Nursery  
St. Louis Mental Health Board  
St. Louis Public School District  
Starkloff Institute  
Touquette Regional Hospital  
University of Missouri-St. Louis  
Children's Advocacy Services of Greater St. Louis  
Community Innovation and Action Center  
CWC Leadership Advisory  
United Way of Greater St. Louis  
Urban League Headstart  
Vision for Children at Risk | Project LAUNCH  
Visions LLC  
Vivian Adams Family Childhood Center  
Washington University  
Wesley House  
Youth in Need

## SUPPORT PROVIDED BY:



## ADDITIONAL COMMUNITY ENGAGEMENT SUPPORT FROM:



## IN PARTNERSHIP WITH:

