

Stories that move us.

**Two Local Wellness Series Debut P. 5**

---

**A New Chapter in Dinosaur Storytelling P. 8**

---

**Federal Funding Makes Important Services Possible P. 10**



# BRAIN TUMOR

CENTER OF EXCELLENCE

MED  
02-08-3

: 02 :  
: 1010 :  
: 586 :  
: 253 :  
: 99 : R

# THE BRIGHTEST MINDS VS. CANCER'S BIGGEST CHALLENGES

Teams of experts. Lifetimes of experience. Ground-breaking clinical trials. That's how you change the game. That's the Brain Tumor Center at Siteman. Committed to research. Invested in technology. Powered by Washington University Physicians and BJC HealthCare. Making a world of difference right here in St. Louis, across the region, and around the world.

GET A SITEMAN OPINION  
314-988-3036 | [SITEMAN.WUSTL.EDU/BRAIN](http://SITEMAN.WUSTL.EDU/BRAIN)





Missouri PBS station leaders visit U.S. Senator Josh Hawley's office during the 2025 Public Media Summit in Washington, DC (left to right): Kliff Kuehl, President and CEO, Kansas City PBS, Amy Shaw, President and CEO, Nine PBS, Joshua Tomlinson, Director of Broadcasting Services and General Manager, KMOS PBS, and Rachel Knight, General Manager, Ozarks Public Broadcasting.

## Dear Friends,

As we send this issue of *Nine PBS Magazine* to the printer, we're wrapping up an eventful spring.

In February, we visited our elected officials in Washington, DC, and shared the critical role public television plays across our country, in Missouri, and in our region. Special thanks to Board Chair Ashley Kemper and board members Mary Nelson and Jill Falk for joining us to share why *Nine PBS* is critical to our region.

In April, I returned to Washington to present our nationally renowned education work to the Corporation for Public Broadcasting Board of Directors and speak to the value we bring into the community, with teachers and caregivers, every day.

I hope you enjoyed the first episode of our new series, *What Do I Do With This?*, which debuted on our *Nine PBS* YouTube channel on Earth Day. The series helps us better understand sustainability and how to be Earth-conscious every day.

In May, we'll post new episodes each week on YouTube. Learn more—and send us your “What do I do with this?” questions—at [ninepbs.org/wdidwt](https://ninepbs.org/wdidwt).

May and June also mean the return of some big events:

- Donnybash returns to the Sheldon Concert Hall on Thursday, May 8. We're excited for another lively—and live—conversation among friends in front of a full house.
- On Tuesday, May 13, we welcome *Antiques Roadshow* to St. Louis for the third time since 2000. We look forward to seeing many of you at Grant's Farm. When these episodes air in early 2026, you'll be able to see what treasures were found in St. Louis.
- Storytime in the Commons continues Saturday, June 14, this time exploring the fascinating world of science and nature. We'll share information about *PBS KIDS's Weather Hunters*, a new animated series from *Today* show weatherperson, Al Roker.

On behalf of all of us at *Nine PBS*, thank you for your continued support. I am so grateful for your generosity and love of *Nine PBS*. I hope to see you this summer!

Best,

A handwritten signature in black ink that reads "Amy Shaw".

Amy Shaw  
President and CEO

**Nine PBS  
Board of Directors**

*Chair*  
Ashley Kemper  
*Vice Chair*  
Robert Koplar  
*Treasurer*  
Mark Krieger  
*Secretary*  
Pamela Morris-Thornton  
*Immediate Past Chair*  
Cynthia Brinkley

*Emeritus*  
Dan Burkhardt  
Maxine Clark  
Pepe Finn  
Harvey A. Harris  
Juanita Hinshaw  
Janet M. Holloway  
Ken Kranzberg  
Kim Olson  
Jack Schreiber  
David Steward II  
Chad Stiening  
Milton P. Wilkins, Jr.

*Members*  
Claudio Abreu  
Nicole Adewale  
Leonardo Bastos  
Fred Bendaña  
Lee Broughton  
Jennifer Davis  
Jeff Diesen  
Hillary Elfenbein  
Jill Falk  
Tiffany Harrison  
Dennis Hummel  
Todd Korte  
Mark S. LaVigne  
Mark C. Lindgren  
Ann Marr  
Thomas C. Melzer  
Mary Nelson  
Maria O'Brien  
Margaret Onken  
Facundo Oyenard  
Cynthia Peters  
Nicole Schnuck  
James E. Williams, Jr.

**Executive Team**  
Amy Shaw, President  
and CEO  
Angela Carr, Vice President  
and Chief Impact Officer  
Leah Freeman, Vice  
President and Chief  
Communications Officer  
Denise Kahle, Vice President  
and Chief Financial Officer  
Chrys Marlow, Vice President  
and Chief Technology Officer  
Kate Midgett, Vice President  
and Chief Organizational  
Excellence Officer  
Amy Turck, Vice President  
and Chief Individual Giving  
Officer  
Aja J. Williams, Vice President  
and Chief Content Officer

**Nine PBS**  
3655 Olive St.  
St. Louis, MO 63108  
(314) 512-9000  
Fax (314) 512-9005  
contactus@  
ninepbs.org  
8:30 am–4:30 pm  
Monday–Friday

EDITOR  
**Lynanne Feilen**  
GRAPHIC DESIGNER  
**Daniil Gerasimov**  
CORPORATE  
SUPPORT  
**Marvin Sanders**  
(314) 514-9137

**Member Services**  
(314) 512-9199  
(800) 729-9966

Nine PBS respects the privacy and confidentiality of our donors and will not sell, give, or exchange any information to any entity.

*Nine PBS Magazine* (ISSN 1086-8828) (USPS 736-890) is published bimonthly by St. Louis Regional Public Media Inc., 3655 Olive St., St. Louis, MO 63108-3601. Periodicals class postage paid at St. Louis, MO. Postmaster: Send address changes to *Nine PBS Magazine*, 3655 Olive St., St. Louis, MO 63108-3601.

©2025 St. Louis Regional Public Media Inc. All rights reserved. Reproduction of any portion of *Nine PBS Magazine* without expressed written permission from the publisher is prohibited.

**Follow Our Stories**

X f @ y i d > ninepbs.org



Our advocacy efforts in Washington, DC, during February's 2025 Public Media Summit were supported by Nine PBS board members (right to left): Jill Falk, Ashley Kemper (chair), Mary Nelson, as well as James Amato, Kansas City PBS board member.



Nine PBS, alongside The Oasis Institute, hosted a special preview screening of *Going Your Way*, a Nine PBS-produced documentary about the personal, medical, and spiritual issues surrounding end-of-life care. Watch it now on the PBS app.



In March, Nine PBS held a special screening (and crafts for kids) of the short documentary *Apart*, an Emmy-winning episode of *Sesame Workshop's Through Our Eyes* series, about how children cope with parental incarceration.

# New Local Series Produced in St. Louis

## Things We Don't Talk About with Aisha Sultan

St. Louis journalist Aisha Sultan holds candid mental health conversations and delves into solutions for healing trauma to find a path toward wellness in a new series on Nine PBS.

In topics ranging from intimate partner violence to intergenerational trauma, Sultan shares personal case studies from within various communities. She talks to mental health professionals about how the person in each scenario would go about seeking help to begin a journey of healing.

➤ [This weekly series airs most Mondays at 7:30 pm.](#)



## Papa Ray's Vintage Vinyl Roadshow

Tom "Papa" Ray, DJ, musician, and owner of St. Louis's Vintage Vinyl (voted one of the 10 best record stores in the U.S. by *USA Today*) visits record stores around the U.S. and the world interviewing other indie store owners, musicians of all genres, and customers/music lovers. In this six-episode debut season, you'll get to know each store's unique story and crucial role in their city's music scene, with archival footage of bands such as Nirvana, Norah Jones, Insane Clown Posse, Red Hot Chili Peppers, Wilco, Jack Black & Tenacious D, and others. (Mumford & Sons is pictured at right.)

➤ [Saturdays at 6:30 pm and streaming on the PBS app.](#)



## The Own Your Now Show

A new lifestyle show focused on wellness is now airing on Nine PBS. Join cohosts Tracie Berry-McGhee (pictured left) and Yolonda Lankford (right) in conversations on wellness, opportunity, knowledge, and empowerment with everyday people, entertainers, educators, and experts.

➤ [This monthly series airs May 14 and June 11 at 1 pm and is streaming on the PBS app.](#)



## St. Louis Teen Talent Competition

Be inspired by the passion, dedication, and love of the performing arts of area high school students during the broadcast of the 15th Annual Teen Talent Competition at the Fox Theatre.

Watch as instrumentalists, vocalists, dancers, acrobats, and more compete for scholarships and cash prizes, courtesy of The Fox Performing Arts Charitable Foundation.

- ▶ **The 2025 competition finale premieres on May 5 at 7 pm; encores are on May 6, 1 pm, May 10, 7 pm, May 11, 10 pm, and May 18, midnight. Watch the broadcast on [ninepbs.org/live](https://www.ninepbs.org/live) or anytime on the free PBS app, go to [Nine PBS Specials](#).**

Support for the broadcast is sponsored by Southeast Missouri State University.



The 2024 winner was singer Molly Sallaberry from St. Joseph's Academy, who won an \$8,000 college scholarship.

## June Storytime in the Commons

Join us, in partnership with St. Louis Public Library, for family time on Saturday, June 14, when we host Storytime in the Commons. We'll explore the fascinating world of science and nature, while you get to take photos with Nature Cat and Elinor from the PBS KIDS's series, *Nature Cat* and *Elinor Wonders Why!* Plus, we will preview the new animated series *Weather Hunters*, coming in July. Our final storytime of the season is planned for September 6.

- ▶ **Registration at [ninepbs.org/events](https://www.ninepbs.org/events).**



## Get Set for New Earth Science Series for Kids



A new animated STEM series for kids ages 5–8 is set to premiere in English and Spanish on July 7 from Al Roker Entertainment. The show is designed to equip kids with the building blocks to start to understand weather overall and encourage them to use STEM skills to make observations, collect data, and investigate the weather where they live. The series centers on Lily Hunter, an intrepid and observant eight-year-old weather detective who shares her investigations with her family and friends, including dad Al Hunter, voiced by Roker.



“Weather has always been a passion of mine, and inspiring young minds to explore its wonders has been one of the most fulfilling parts of this journey,” says Roker, an Emmy-winning weatherperson and host of the *Today* show. “With *Weather Hunters*, I’m thrilled to share that passion with a new generation, including my granddaughter, Sky, who reminds me every day of the importance of leaving a better planet for our kids.”

▶ [Watch \*Weather Hunters\* weekdays beginning July 7 on Nine PBS, PBS KIDS, or stream on youtube.com/@PBSKIDS and pbskids.org.](#)

## Miss Scarlet Renewed for Season 6

Masterpiece PBS announced that *Miss Scarlet* will return for a sixth season. Kate Phillips will reprise her role as the title character in the new installment, which began filming in February 2025 in Belgrade, Serbia.

As Eliza and Blake’s once-fraught relationship begins to evolve, they find that working together may be a tricky prospect. Meanwhile, newlyweds Ivy and Potts adjust to married life, a new detective settles in at Scotland Yard, and Nash causes chaos, even from across the globe.

Joining Season 6’s adventures is Moses Valentine, who swoops in to help Eliza and her crew, just when they need him most.



# Bringing Dinosaurs Back to Life



It's been over 25 years since *Walking with Dinosaurs* first transported us back to the prehistoric world, and now, it's making a triumphant return. In 1999, the BBC's documentary-style miniseries became a cultural phenomenon thanks in part to its state-of-the-art computer-generated imagery (CGI) creatures.

A new six-part series promises to be bigger, bolder, and more scientifically accurate than ever before, thanks to cutting-edge research and groundbreaking visual effects. The revival of this beloved series is set to captivate audiences old and new.

Watch the back-to-back episodes on Nine PBS **Monday–Wednesday, June 16–18, from 7–9 pm**. A marathon of all six episodes will broadcast **Sunday, June 22, from 11 am–5 pm**. Each episode will be available to stream in the PBS app for 30 days from the broadcast date before moving into Passport.

When *Walking with Dinosaurs* first aired in 1999, it revolutionized the way we saw these prehistoric giants. Now, with advancements in paleontology and digital technology, the series is ready to take another giant leap forward. Each episode will focus on the life story of an individual dinosaur, blending real-time fossil discoveries with CGI to bring these ancient creatures back to life.

Viewers will journey across different prehistoric landscapes, from the riverbanks of ancient Morocco, where the mighty Spinosaurus—the largest carnivorous dinosaur ever known—once ruled, to North America, where a young Triceratops must fight for survival against a ravenous T. rex. The series will also introduce us to a lovesick Lusitanian in Portugal, revealing the complex behaviors and dramatic struggles of these fascinating creatures.



## Science Meets Spectacle



We're living in a golden age of paleontology. With around 50 new dinosaur species being identified every year, our understanding of these ancient creatures is rapidly evolving.

Thanks to new fossil discoveries, we now know that many dinosaurs had feathers, complex social behaviors, and even parental instincts. This series will incorporate the latest scientific findings, ensuring that what we see on screen is as accurate as possible.

One of the highlights of the new *Walking with Dinosaurs* is its focus on real-time discoveries. As paleontologists unearth new fossils, viewers will get an exclusive look at the process of piecing together the past. The show will take us from dusty dig sites to high-tech laboratories, demonstrating how experts use modern tools to unlock the secrets of creatures that roamed the Earth millions of years ago.

With exclusive access to some of the world's top paleontologists and excavation sites, *Walking with Dinosaurs* is more than just a documentary—it's a thrilling, immersive experience. Whether you're a lifelong dinosaur enthusiast or just someone who loves a great story, this is one show you won't want to miss.

So, get ready to step back in time and witness the prehistoric world like never before. In 2025, *Walking with Dinosaurs* is making its long-awaited return, and it's set to be an adventure millions of years in the making.

- **Each episode of this six-part series will be available to stream in the PBS app for 30 days from the broadcast before moving into Passport.**

## More Amazing Dinosaurs



### Nature: Museum Alive with David Attenborough

➤ Jun 16, 9 pm

### Fossil Country

➤ Jun 16, 10 pm

### Nature: Attenborough and the Jurassic Sea Monster

➤ Jun 17, 9 pm

### Paleo Sleuths

➤ June 17, 10 pm

### Nova: Alaskan Dinosaurs

➤ June 18, 9 pm

### Nova: Great Mammoth Mystery

➤ Jun 25, 9 pm

### Dinosaur Train

➤ Sat-Sun, 5:30 am on the PBS KIDS 24/7 channel

# Funding Makes Possible Important Services

Since our founding in 1954, Nine PBS has been a community-focused and community-funded public television station, thanks to generations of St. Louisans and your financial donations.

Even though we regularly thank viewers like you, many people still wonder—how is Nine PBS funded? How much of it comes from the federal government? Do you receive any funding from the state of Missouri? How does it all work?

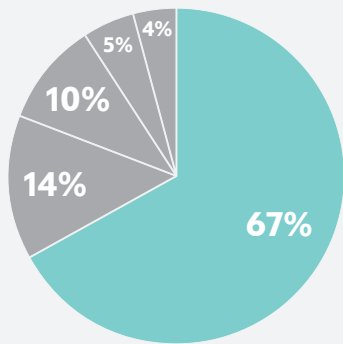
## Annual Budget

Nine PBS has an annual budget of more than \$15 million: composed of 86% funding from the St. Louis region, 13% from federal support, and 1% from the state.

The following pie charts detail the five primary sources of revenue that make up Nine PBS's Annual Fund.\*



After the station received its call letters from the FCC in the early 1950s, additional funds were still needed to get it on the air. PTA moms from more than 100 school districts jumped in to help, going door to door and raising more than \$100,000, which made the St. Louis Plan (a community-focused and -funded station) a reality.



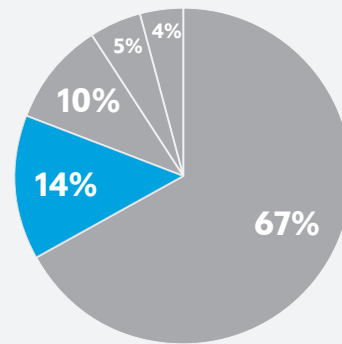
## INDIVIDUAL GIVING

Each year individual giving represents approximately two-thirds (67%) of Nine PBS's annual revenue. Close to \$10 million—from more than 46,500 individuals—falls into these three categories:

**Membership: 66%**

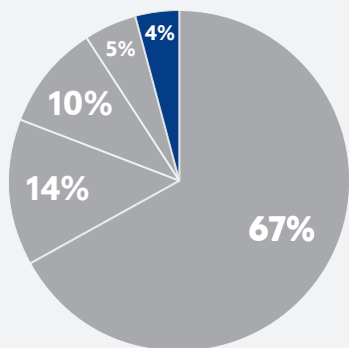
**Major Gifts: 23%**

**Planned Giving: 11%**



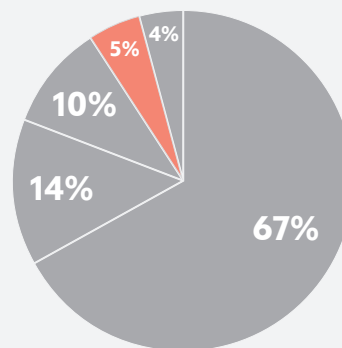
## GOVERNMENT SUPPORT

Support from the federal government represents 13% of our total annual budget. The remaining amount comes from the Missouri Arts Council through the Athletes and Entertainers Tax Fund, which is about 1% of our total budget.



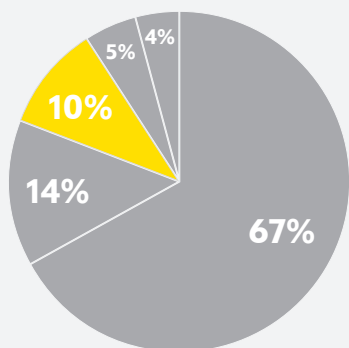
**CORPORATE & FOUNDATION**

Underwriting support is a visible recognition of our sponsors on air, representing approximately 4% of our overall annual budget. This includes monetary and in-kind underwriting, as well as our annual distribution from the Patterson Trust.



**COMMUNITY ENGAGEMENT**

This funding comes primarily from foundations and companies for our community-based initiatives. This work is driven by our Community Engagement Model and the needs of our region.



**PRODUCTION AND OTHER**

This includes a variety of resources outside of our philanthropic support, such as:

- V9 Digital, earned revenue
- Tower and office rentals
- Magazine and event revenue
- Bank/investment interest and unrealized gains/losses

**Government Support**

Each year, the majority of our government funding—13% out of the 14% pie slice—comes from the federal government through the Corporation for Public Broadcasting (CPB). A private corporation, CPB was created by Congress through the Public Broadcasting Act of 1967. CPB is the steward of the federal government’s investment in public broadcasting and the largest single source of funding for public television and radio nationwide.

Federal investment in public media is less than one-hundredth of one percent of the federal budget each year. This amounts to only about \$1.60 per taxpayer per year, but it makes possible an incredible range of important services, including:

**PUBLIC SAFETY:** Public television plays a crucial role in public safety by ensuring Wireless Emergency Alerts (WEAs), such as severe weather warnings and AMBER alerts, are distributed uninterrupted, even in the worst of storms. We also provide the backbone for the broadcast emergency alerts for all local media. This is especially important in rural areas, which have less reliable internet connections.

\*Based on the audited FY24 financials (July 2, 2023–June 30, 2024).

CONTINUED ON THE NEXT PAGE

**EDUCATION:** Nine PBS offers parents free, high-quality, educational television series, digital games, streaming content, and resources to support them and help improve their kids' school readiness. We help bridge the digital divide for families without adequate internet access. And we support teachers across the region with free, trusted materials.

**COMMUNITY CONNECTION:** Nine PBS has been connecting our region for more than 70 years. Today, we listen to you on what issues you'd like addressed and stories you think should be told. Through our content, we explore local history and culture, encourage civic engagement and local pride, and help our region understand issues and opportunities.

Nine PBS is proud to be the St. Louis region's storyteller and trusted partner. We connect our community through compelling national programs, inspiring local stories, and engaging initiatives that help our region flourish.

We are so grateful for your support, and we look forward to continuing to serve St. Louis and playing a key role in building our community's future for all.



Point your smartphone camera at the QR code, then tap the link to learn more about our federal funding.

# May 8, 2025

# GIVE STL DAY

A stylized graphic of a stadium or arena, rendered in white lines against the blue background, positioned to the right of the 'GIVE STL DAY' text.

Your donation supports content that is produced locally, right here in St. Louis. Add your name to the supporters who keep Nine PBS and our community thriving by supporting us through a donation on Give STL Day.

**Go to [givestlday.org/ninepbs](https://givestlday.org/ninepbs) now to show your support.**

## Why Support Us?

We are *public* media. Unlike commercial media, we exist to serve the public good.

There are a number of ways you can support the work of Nine PBS: leave a gift in your will, donate a vehicle, or make a gift of real estate.

There are lots of other ways to support Nine PBS, too. Visit [ninepbs.org/support](https://ninepbs.org/support) to learn more.

### Recently, Nine PBS received a generous land donation from a longtime supporter:

"My husband, Dale, was raised farming in Kansas, where a deep connection to the land and its care was instilled in him. Land was extremely important to him. After he passed away, our family found ourselves with a piece of property that held deep sentimental value. It had been a cherished location for family gatherings over the years, but as time passed, it became increasingly difficult to maintain and access. When our children decided not to take on the property, I wanted to honor its significance and my husband's legacy.

After thoughtful consideration, I chose to donate the property to Nine PBS so they could use the proceeds to support their work in the St. Louis community. This decision not only honors Dale's values but also supports Nine PBS's mission to provide trusted, high-quality educational programming to the St. Louis region. It brings me great comfort to know that this gift will have a meaningful impact on the community while preserving the spirit of something so special to our family."

—Linda



Gifts like Linda's allow Nine PBS to provide your favorite national programs, inspiring local stories, and engaging initiatives that help our region flourish.

### Donating Real Estate Is Simple and Easy

Point your smartphone camera at the QR code, then tap the link to learn more about our real estate donation program.



## What Do I Do With This?

A fun, new Nine PBS digital series raises awareness about the environmental impact of all our unwanted stuff. The series focuses on specific household items that you might commonly question whether to recycle, donate, throw away, or arrange for special disposal services. You'll learn strategies for reducing consumption and creative ways to reuse what you already have. Host and producer Brooke Butler will demystify the process and tackle electronics, furniture, chemicals, fabrics, and more.

*What Do I Do With This?* is part of the PBS Earth Month lineup. Celebrate all things earth with this playlist of videos tackling subjects like climate change, animals, farming, and conservation from the experts at PBS. Watch on YouTube at the playlist: Earth Month from PBS.

› **What Do I Do With This? is available on Nine PBS's YouTube channel, the PBS app, and [ninepbs.org/wdidwt](https://www.ninepbs.org/wdidwt).**



Host Brooke Butler (center) at Republic Services Recycling Center.

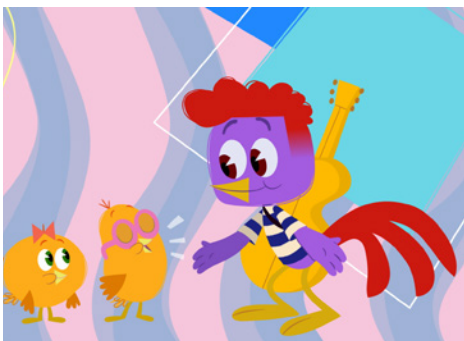
*This digital series is supported in part by Cass Information Systems, Inc., the Graybar Foundation, and the Betsy & Thomas O. Patterson Foundation.*



## Caregiving

The two-hour documentary from executive producer Bradley Cooper reveals the vital impact of the caregiver's role in the family, the workplace, and the country's economy from multiple perspectives. The experience is personal for Cooper, who was a caregiver for his late father, Charles J. Cooper, during his battle with lung cancer.

› **Streaming on the PBS app beginning on May 27, followed by the broadcast premiere on June 24 at 8 pm.**



## Acoustic Rooster and His Barnyard Band

Based on the beloved children's book by bestselling author Kwame Alexander, the Acoustic Rooster universe is coming to PBS KIDS. A one-hour special, *Acoustic Rooster and His Barnyard Band*, and *Acoustic Rooster: Jazzy Jams*, an upbeat, animated series of 20 shorts, introduces kids ages 3-5 to the vibrant world of the arts, specifically jazz music, while reinforcing the importance of collaboration, creativity, and self-expression.

› **The special premieres on May 2 at 1:30 pm on PBS KIDS.**

## WATCH LIVE OR STREAM ON THE PBS APP.

Over the air: 9.1 | Spectrum digital cable: 709 | Dish Network and DirecTV carry only Nine PBS on channels 8596 and 0009 (HD on 887)  
U-verse carries only Nine PBS on channel 9 or 1009 (HD).



## New with Nine PBS Passport

Nine PBS Passport is a member benefit that offers access to a vast library of superb programs available for streaming on demand through the PBS app. Watch international dramas, entire seasons of select series before broadcast, or seasons or episodes you might have missed. Visit [ninepbs.org/passport](https://ninepbs.org/passport) to get started. New programs are added monthly.



## Miss Austen on Masterpiece

*Miss Austen* (left) takes a literary mystery—Cassandra Austen notoriously burning her famous sister Jane’s letters—and reimagines it as a fascinating, witty, and heart-breaking story of sisterly love. The drama begins in 1830, after Jane has died.

➤ **Sundays, beginning May 4, 8 pm, with a two-episode finale on May 18.**

### Matter of Mind: My Alzheimer’s

Independent Lens presents an intimate portrayal of three families confronting the unique challenges of Alzheimer’s and how this progressive neurodegenerative disease transforms roles and relationships. Whether it’s a partner becoming a caregiver or an adult child shifting into being their parent’s caretaker, these stories show how families evolve when a loved one is diagnosed. **Available on the PBS app for 30 days beginning May 5 before moving into Passport.**

### Grantchester on Masterpiece, Season 10

As DI Geordie Keating (Robson Green) and Reverend Alphy Kottaram (Rishi Nair) continue to work together as a crime-solving duo in scenic Grantchester, they must also support each other through changing times, family struggles, and personal secrets. **Binge all eight episodes of this series starting on the night of its broadcast premiere (June 15) with Passport. Seasons 1–9 are streaming now with Passport.**

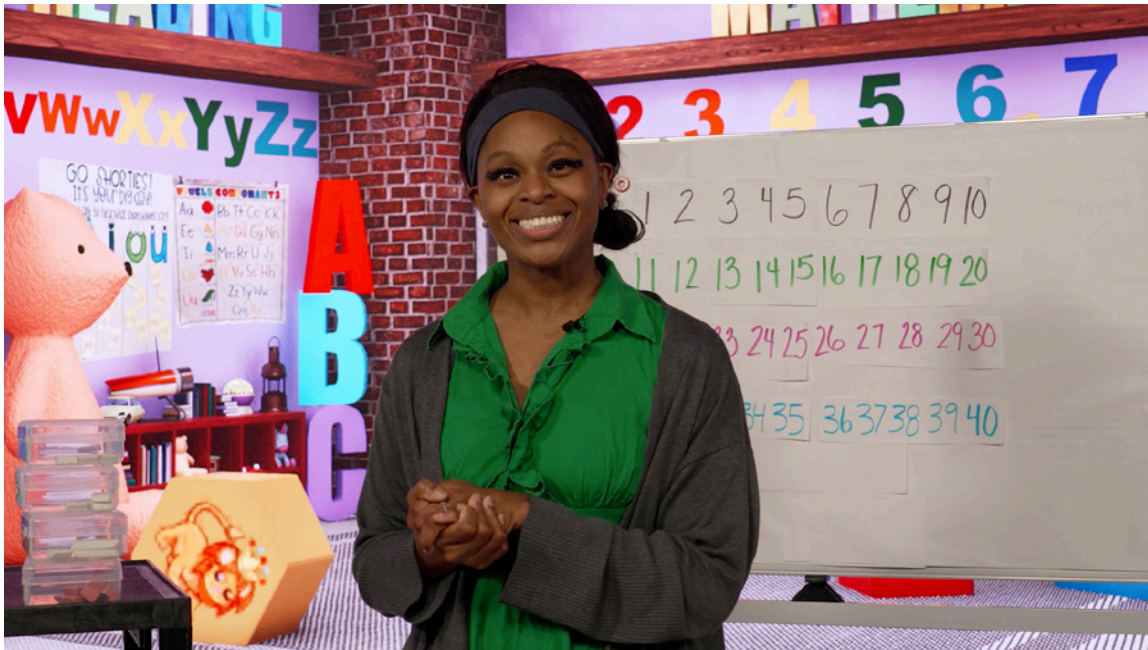
### MAY

Aging in America: Survive or Thrive  
 Changing Planet: River Revolution  
 Cold Summer, Season Premiere  
 Corridors of Power  
 Cuba Libre, Season 1  
 Express Way with Dule Hill  
 Finding Your Roots: Finding My Roots  
 Future of Nature: Forests, Grasslands, Humans  
 Performances: Now Hear This | Barrios: Chopin of the Guitar, Boccherini: Night Music, Chopin’s Polish Heart, The Magic of Nureyev  
 Rachmaninoff Reborn  
 Independent Lens: Bike Vessel  
 The Intern, Season 3  
 The Legacy, Season 2  
 Lucy Worsley Investigates: Bloody Mary  
 Nature: Katavi: Africa’s Fallen Paradise | Purgatory, Salvation, Sanctuary  
 Nature: Museum Alive with David Attenborough  
 Nova: Critical Condition: Health in Black America  
 Nova: Revolutionary War Weapons  
 Nova: Secrets of the Forest  
 Pale Mountains, Season 1  
 Pati Jinich Explores Panamericana: Alaska  
 Playing Like a Girl: The House That Rob Built

### JUNE

American Experience: Mr. Polaroid  
 American Masters: Liza: A Truly Terrific  
 Absolutely True Story  
 Antiques Roadshow  
 Austin City Limits Celebrates 50 Years  
 Bardot, Season 1  
 Bugs That Rule the World: Beetle Mania, Eat or Be Eaten, Lifegivers, Insect Apocalypse  
 City of Songs  
 The Class  
 Deadlock  
 Grantchester, Season 10  
 Great Performances: Girl from the North Country, Kiss Me, Kate, Next to Normal, Yellow Face  
 Independent Lens: Matter of Mind: My Alzheimer’s  
 Isolated, Season 1  
 My Music with Rhiannon Giddens: Niwel Tsumbu, Emer Mayock, Enda Scahill, Loah  
 Nature: Hummingbirds of Hollywood  
 Nova: Ultimate Crash Test: Countdown, Impact  
 Pati Jinich Explores Panamericana: Alberta, Juneau & Whitehorse  
 Patience, Season 1  
 POV: King Coal, The Taste of Mango  
 Velvet, Season 3  
 When The Dust Settles, Season 1

## Nine PBS Early Learning Supports STEM



Math teacher Ms. Williams on the set of *Teaching in Room 9*.

Nine PBS's *Teaching in Room 9*, the region's largest classroom, continues to provide high exposure to science, technology, engineering, and mathematics (STEM) concepts on-air each weekday. The program is designed to ensure three- to five-year old kids are prepared for the classroom. Some of the *Teaching in Room 9* STEM lessons include reading clocks, number recognition and counting, and weather. The program also hosts virtual field trips to locations that support STEM learning like the Saint Louis Zoo, the Science Center, and the Federal Reserve Bank of St. Louis.

*Teaching in Room 9* content is also part of Nine PBS STEM Power Hours to support children, families, and educators. Each Power Hour series has six sessions that incorporate video content, print, and digital media with hands-on, playful learning strategies to boost children's curiosity around STEM and increase family confidence in supporting out-of-school learning around STEM concepts.

In 2024, STEM Power Hours engaged nearly 200 children throughout 28 sessions of STEM Power Hour offerings. Each lesson addresses at least three state standards identified to have the greatest gap in achievement for under-resourced schools.

Our team has built deep and longstanding community partnerships in our priority neighborhoods of North St. Louis County, North St. Louis City, and East St. Louis to support the kids of the region as we host, implement, and evaluate our Power Hours. Some Power Hour partnerships include St. Louis Public Library, Normandy Early Childhood Center, and Riverview Gardens School District.

---

***“Integrating STEM into early education is not just beneficial—it’s essential. Early exposure to STEM builds the foundation for problem-solving, innovation, and adaptability, equipping young learners with the skills they need to thrive in an ever-evolving world. When we invest in STEM from the start, we empower the next generation of thinkers, creators, and leaders.”***

—Dr. Arionna Ralleigh, Nine PBS curriculum design manager and scriptwriter/producer on *Teaching in Room 9*

---



## Neighborhood Hero



Nine PBS also produces Neighborhood Hero stories. Each story represents a STEM professional that grew up in one of our priority neighborhoods and has remained in the St. Louis region as a STEM professional.

Stories aim to show children what it means to dream big in STEM and that success stories in our own neighborhoods are all around us, like the story of Dr. Marcus Howard, founder and CEO of GreaterHealth Pharmacy & Wellness, who grew up in North St. Louis City.

At a young age, Dr. Howard realized he had an interest in science and health, as well as giving back to his community. Dr. Howard credits Nine PBS programming with helping him gain confidence and self-esteem through programming that reflected his experience as a Black kid in St. Louis.

“I would tell a young kid from St. Louis, don’t be afraid to fail and change the world. And the only way you’re going to change the world, the only way you’re going to impact the lives of people, is to go forward, to think big, and don’t be afraid to fail,” says Howard.



Scan QR code to see our chat with Marcus Howard.

*STEM in Nine PBS's Early Learning Initiative is supported by Boeing, Emerson Charitable Trust, and Pershing Charitable Trust.*

## STEM Careers and the Potential in Our Region

With nearly 60,000 job postings in 2023, the St. Louis region held Missouri’s highest number of STEM job openings for the year (Missouri Economic Research and Information Center, 2024). These opportunities include jobs in fields like agricultural science, healthcare, medical research, and manufacturing.

In Missouri, wages for STEM occupations are higher than the average wage for all other occupations. In 2020, the average wage in Missouri was \$50,140 while the average wage for STEM-related occupations was \$79,441 (Missouri Economic Research and Information Center, 2022).

Though there are great career opportunities in the STEM field, kids need support in growing STEM skills and confidence. According to a 2023 Gallup Poll, 75% of Generation Z youth were interested in pursuing a STEM career. But only 29% chose it as their first career choice.

A strong early education foundation has a lasting impact on educational and professional achievements. When STEM is a concentrated focus within early learning curriculum for all students, it removes barriers, helping kids understand the opportunity and possibilities within STEM occupations.

**STREAM ANYTIME**

Most of our programs are available to stream free for a limited time on the PBS App and for extended periods with Nine PBS Passport. You can always stream our broadcast live on any device at [ninepbs.org/live](http://ninepbs.org/live) and access our content with the free Local Now app and with Hulu + Live TV, YouTube TV, and DirecTV Stream subscriptions.

**LISTINGS KEY**

(9) Nine PBS production  
(PB) Program contains pledge breaks

**WEEKDAYS**

5:00	Rick Steves' Europe
5:30	Classical Stretch
6:00	BBC News
6:30	Alma's Way
7:00	Lyla in the Loop
7:30	Carl the Collector
8:00	Daniel Tiger's Neighborhood
8:30	Rosie's Rules
9:00	Sesame Street
9:30	Teaching in Room 9
10:00	Work It Out Wombats!
10:30	Pinkalicious & Peterrific
11:00	Elinor Wonders Why
11:30	Nature Cat
12:00	Antiques Roadshow
12:30	
1:00	
1:30	General Audience (Adult) Programming
2:00	
2:30	
3:00	Molly of Denali
3:30	Wild Kratts
4:00	Odd Squad
4:30	Arthur
5:00	Alma's Way
5:30	BBC News America
6:00	PBS News Hour



Over the air: 9.1 | Spectrum digital cable: 709

**THU | MAY 1**

**EVENING**

- 7:00 Donnybrook (9)
- 7:30 Living St. Louis (9)
- 8:00 Whitstable Pearl
- 9:00 Brokenwood Mysteries
- 10:30 Things We Don't Talk About
- 11:00 BBC News
- 11:30 Amanpour and Company

**LATE NIGHT**

- 12:30 NHK Newline
- 1:00 Nova
- 3:00 In the Americas
- 3:30 Best of the Joy of Painting
- 4:00 Rare Visions & Roadside Revelations
- 4:30 Travelscope

**FRI | MAY 2**

**EVENING**

- 7:00 Washington Week with The Atlantic
- 7:30 Donnybrook (9)
- 8:00 Vietnam War (5 of 10)
- 9:30 The Seabees on Iwo Jima
- 10:30 Living St. Louis (9)
- 11:00 BBC News
- 11:30 Amanpour and Company

**LATE NIGHT**

- 12:30 NHK Newline
- 1:00 Donnybrook (9)
- 1:30 Living St. Louis (9)
- 2:00 Things We Don't Talk About
- 2:30 The 89th Annual Anisfield-Wolf Book Awards
- 3:00 In the Americas
- 3:30 Best of the Joy of Painting
- 4:00 Rare Visions & Roadside Revelations
- 4:30 Travelscope

**SAT | MAY 3**

**MORNING**

- 5:00 Rick Steves' Europe
- 5:30 America's Heartland
- 6:00 Wild Kratts
- 6:30 Alma's Way
- 7:00 Lyla in the Loop
- 7:30 Carl the Collector
- 8:00 Daniel Tiger's Neighborhood
- 8:30 Rosie's Rules
- 9:00 Sesame Street

- 9:30 Work It Out Wombats!
- 10:00 J Schwanke's Life in Bloom
- 10:30 Les Stroud's Wild Harvest
- 11:00 New Scandinavian Cooking
- 11:30 Pati's Mexican Table

**AFTERNOON**

- 12:00 Christopher Kimball's Milk Street Television
- 12:30 America's Test Kitchen
- 1:00 America's Test Kitchen
- 1:30 Cook's Country
- 2:00 Cook's Country
- 2:30 Key Ingredient with Sheri Castle
- 3:00 Lidia's Kitchen
- 3:30 America the Bountiful
- 4:00 MotorWeek
- 4:30 Curious Traveler
- 5:00 This Old House
- 5:30 Ask This Old House
- 6:00 PBS News Weekend
- 6:30 Papa Ray's Vintage Vinyl Roadshow

**EVENING**

- 7:00 Antiques Roadshow
- 8:00 As Time Goes By
- 8:30 Keeping Up Appearances
- 9:00 Movie: Escape from Alcatraz (1979)
- 11:00 ACL 10th Annual Hall of Fame Honors: Garth Brooks

**LATE NIGHT**

- 1:00 Nova: Critical Condition: Health in Black America
- 3:00 In the Americas
- 3:30 Best of the Joy of Painting
- 4:00 Rare Visions & Roadside Revelations
- 4:30 Travelscope

**SUN | MAY 4**

**MORNING**

- 5:00 Rick Steves' Europe
- 5:30 In the Americas
- 6:00 Wild Kratts
- 6:30 Alma's Way
- 7:00 Lyla in the Loop
- 7:30 Carl the Collector
- 8:00 Daniel Tiger's Neighborhood
- 8:30 Rosie's Rules
- 9:00 Sesame Street
- 9:30 Living St. Louis (9)
- 10:00 Ireland with Michael
- 10:30 Weekends with Yankee
- 11:00 View Finders
- 11:30 tasteMAKERS

## AFTERNOON

- 12:00 Secrets of the Royal Palaces:  
Buckingham Palace
- 1:00 Great Performances: Now Hear This:  
Barrios: Chopin of the Guitar
- 2:00 Voces: Mambo Legends: The Music  
Never Ends
- 3:00 Independent Lens: Free for All: The  
Public Library
- 4:30 Brokenwood Mysteries
- 6:00 PBS News Weekend
- 6:30 Samantha Brown's Places to Love

## EVENING

- 7:00 Call the Midwife
- 8:00 Miss Austen on Masterpiece, Series  
Premiere
- 9:00 Marie Antoinette
- 10:00 Movie: Escape from Alcatraz (1979)

## LATE NIGHT

- 12:00 Celebrity Antiques Road Trip
- 1:00 Call the Midwife
- 2:00 Whitstable Pearl
- 3:00 In the Americas
- 3:30 Best of the Joy of Painting
- 4:00 Rare Visions & Roadside Revelations
- 4:30 Travelscope

## MON | MAY 5

## EVENING

- 7:00 St. Louis Teen Talent Competition  
2025 (9)
- 8:00 Antiques Roadshow
- 9:00 Antiques Roadshow
- 10:00 Independent Lens: Matter of Mind:  
My Alzheimer's
- 11:00 BBC News
- 11:30 Amanpour and Company

## LATE NIGHT

- 12:30 NHK Newline
- 1:00 Miss Austen
- 2:00 Marie Antoinette
- 3:00 In the Americas
- 3:30 Best of the Joy of Painting
- 4:00 Rare Visions & Roadside Revelations
- 4:30 Travelscope

## TUE | MAY 6

## EVENING

- 7:00 Finding Your Roots
- 8:00 Pati Jinich Explores Panamericana
- 9:00 Frontline

- 10:00 American Delivery
- 11:00 BBC News
- 11:30 Amanpour and Company

## LATE NIGHT

- 12:30 NHK Newline
- 1:00 Antiques Roadshow
- 2:00 Antiques Roadshow
- 3:00 In the Americas
- 3:30 Best of the Joy of Painting
- 4:00 Rare Visions & Roadside Revelations
- 4:30 Travelscope

## WED | MAY 7

## EVENING

- 7:00 Nature: Hummingbirds of Hollywood
- 8:00 Nova: Ultimate Crash Test:  
Countdown
- 9:00 Bugs That Rule the World (1 of 4)
- 10:00 Evolution Earth: Earth
- 11:00 BBC News
- 11:30 Amanpour and Company

## LATE NIGHT

- 12:30 NHK Newline
- 1:00 Finding Your Roots
- 2:00 Pati Jinich Explores Panamericana
- 3:00 In the Americas
- 3:30 Best of the Joy of Painting
- 4:00 Rare Visions & Roadside Revelations
- 4:30 Travelscope

## THU | MAY 8

## EVENING

- 7:00 Donnybrook (9)
- 7:30 Living St. Louis (9)
- 8:00 Whitstable Pearl
- 9:00 Brokenwood Mysteries
- 10:30 Living St. Louis (9)
- 11:00 BBC News
- 11:30 Amanpour and Company

## LATE NIGHT

- 12:30 NHK Newline
- 1:00 Nature
- 2:00 Nova
- 3:00 In the Americas
- 3:30 Best of the Joy of Painting
- 4:00 Rare Visions & Roadside Revelations
- 4:30 Travelscope

## FRI | MAY 9

## EVENING

- 7:00 Washington Week with The Atlantic
- 7:30 Donnybrook (9)
- 8:00 Vietnam War (6 of 10)
- 9:30 Now Return Us to Normal
- 11:00 BBC News
- 11:30 Amanpour and Company

## LATE NIGHT

- 12:30 NHK Newline
- 1:00 Donnybrook (9)
- 1:30 Living St. Louis (9)
- 2:00 Frontline
- 3:00 In the Americas
- 3:30 Best of the Joy of Painting
- 4:00 Rare Visions & Roadside Revelations
- 4:30 Travelscope

## SAT | MAY 10

## MORNING

- 5:00 Rick Steves' Europe
- 5:30 America's Heartland
- 6:00 Wild Kratts
- 6:30 Alma's Way
- 7:00 Lyla in the Loop
- 7:30 Carl the Collector
- 8:00 Daniel Tiger's Neighborhood
- 8:30 Rosie's Rules
- 9:00 Sesame Street
- 9:30 Work It Out Wombats!
- 10:00 J Schwanke's Life in Bloom
- 10:30 Les Stroud's Wild Harvest
- 11:00 New Scandinavian Cooking
- 11:30 Pati's Mexican Table

## AFTERNOON

- 12:00 Christopher Kimball's Milk Street  
Television
- 12:30 America's Test Kitchen
- 1:00 America's Test Kitchen
- 1:30 Cook's Country
- 2:00 Cook's Country
- 2:30 Key Ingredient with Sheri Castle
- 3:00 Lidia's Kitchen
- 3:30 America the Bountiful
- 4:00 MotorWeek
- 4:30 Curious Traveler
- 5:00 This Old House
- 5:30 Ask This Old House
- 6:00 PBS News Weekend
- 6:30 Papa Ray's Vintage Vinyl Roadshow

## EVENING

- 7:00 St. Louis Teen Talent Competition 2025 (9)
- 8:00 As Time Goes
- 8:30 Keeping Up Appearances
- 9:00 Movie: Fiddler on the Roof (1971)

## LATE NIGHT

- 12:00 Austin City Limits
- 1:00 Bugs That Rule the World
- 2:00 Nova
- 3:00 In the Americas
- 3:30 Best of the Joy of Painting
- 4:00 Rare Visions & Roadside Revelations
- 4:30 Travelscope

## SUN | MAY 11

## MORNING

- 5:00 Rick Steves' Europe
- 5:30 In the Americas
- 6:00 Wild Kratts
- 6:30 Alma's Way
- 7:00 Lyla in the Loop
- 7:30 Carl the Collector
- 8:00 Daniel Tiger's Neighborhood
- 8:30 Rosie's Rules
- 9:00 Sesame Street
- 9:30 Living St. Louis (9)
- 10:00 Ireland with Michael
- 10:30 Weekends with Yankee
- 11:00 View Finders
- 11:30 tasteMAKERS

## AFTERNOON

- 12:00 Secrets of the Royal Palaces: Westminster
- 1:00 Great Performances: Next to Normal
- 3:30 Mama Said, Mama Said (9)
- 4:30 Brokenwood Mysteries
- 6:00 PBS News Weekend
- 6:30 Samantha Brown's Places to Love

## EVENING

- 7:00 Call the Midwife
- 8:00 Miss Austen on Masterpiece
- 9:00 Marie Antoinette
- 10:00 Movie: Fiddler on the Roof (1971)

## LATE NIGHT

- 1:00 Call the Midwife
- 2:00 Whitstable Pearl
- 3:00 In the Americas
- 3:30 Best of the Joy of Painting

- 4:00 Rare Visions & Roadside Revelations
- 4:30 Travelscope

## MON | MAY 12

## EVENING

- 7:00 Living St. Louis (9)
- 7:30 Things We Don't Talk About
- 8:00 Antiques Roadshow
- 9:00 Antiques Roadshow
- 10:00 Independent Lens: And So It Begins
- 11:30 Amanpour and Company

## LATE NIGHT

- 12:30 NHK Newline
- 1:00 Miss Austen
- 2:00 Marie Antoinette
- 3:00 In the Americas
- 3:30 Best of the Joy of Painting
- 4:00 Rare Visions & Roadside Revelations
- 4:30 Travelscope

## TUE | MAY 13

## EVENING

- 7:00 Finding Your Roots
- 8:00 Pati Jinich Explores Panamericana
- 9:00 American Masters: Hopper: An American Love Story
- 10:00 St. Louis Teen Talent Competition 2025 (9)
- 11:00 BBC News
- 11:30 Amanpour and Company

## LATE NIGHT

- 12:30 NHK Newline
- 1:00 Antiques Roadshow
- 2:00 Antiques Roadshow
- 3:00 In the Americas
- 3:30 Best of the Joy of Painting
- 4:00 Rare Visions & Roadside Revelations
- 4:30 Travelscope

## WED | MAY 14

## EVENING

- 7:00 Nature: My Garden of a Thousand Bees
- 8:00 Nova: Ultimate Crash Test: Impact
- 9:00 Bugs That Rule the World (2 of 4)
- 10:00 Evolution Earth: Islands
- 11:00 BBC News
- 11:30 Amanpour and Company

## LATE NIGHT

- 12:30 NHK Newline
- 1:00 Finding Your Roots
- 2:00 Pati Jinich Explores Panamericana
- 3:00 In the Americas
- 3:30 Best of the Joy of Painting
- 4:00 Rare Visions & Roadside Revelations
- 4:30 Travelscope

## THU | MAY 15

## EVENING

- 7:00 Donnybrook (9)
- 7:30 Living St. Louis (9)
- 8:00 Whitstable Pearl
- 9:00 Brokenwood Mysteries
- 10:30 Decades: 1940-1950 (9)
- 11:00 BBC News
- 11:30 Amanpour and Company

## LATE NIGHT

- 12:30 NHK Newline
- 1:00 Nature
- 2:00 Nova
- 3:00 In the Americas
- 3:30 Best of the Joy of Painting
- 4:00 Rare Visions & Roadside Revelations
- 4:30 Travelscope

## FRI | MAY 16

## EVENING

- 7:00 Washington Week with The Atlantic
- 7:30 Donnybrook (9)
- 8:00 Vietnam War (7 of 10)
- 10:00 Walk with Frank
- 11:00 BBC News
- 11:30 Amanpour and Company

## LATE NIGHT

- 12:30 NHK Newline
- 1:00 Donnybrook (9)
- 1:30 Living St. Louis (9)
- 2:00 American Masters
- 3:00 In the Americas
- 3:30 Best of the Joy of Painting
- 4:00 Rare Visions & Roadside Revelations
- 4:30 Travelscope

## SAT | MAY 17

## MORNING

- 5:00 Rick Steves' Europe
- 5:30 America's Heartland

- 6:00 Wild Kratts
- 6:30 Alma's Way
- 7:00 Lyla in the Loop
- 7:30 Carl the Collector
- 8:00 Daniel Tiger's Neighborhood
- 8:30 Rosie's Rules
- 9:00 Sesame Street
- 9:30 Work It Out Wombats!
- 10:00 J Schwanke's Life in Bloom
- 10:30 Les Stroud's Wild Harvest
- 11:00 New Scandinavian Cooking
- 11:30 Pati's Mexican Table

**AFTERNOON**

- 12:00 Christopher Kimball's Milk Street Television
- 12:30 America's Test Kitchen
- 1:00 America's Test Kitchen
- 1:30 Cook's Country
- 2:00 Cook's Country
- 2:30 Key Ingredient with Sheri Castle
- 3:00 Lidia's Kitchen
- 3:30 America the Bountiful
- 4:00 MotorWeek
- 4:30 Curious Traveler
- 5:00 This Old House
- 5:30 Ask This Old House
- 6:00 PBS News Weekend
- 6:30 Papa Ray's Vintage Vinyl Roadshow

**EVENING**

- 7:00 Antiques Roadshow
- 8:00 As Time Goes By
- 8:30 Keeping Up Appearances
- 9:00 Movie: The Great Train Robbery (1978)
- 11:00 Austin City Limits

**LATE NIGHT**

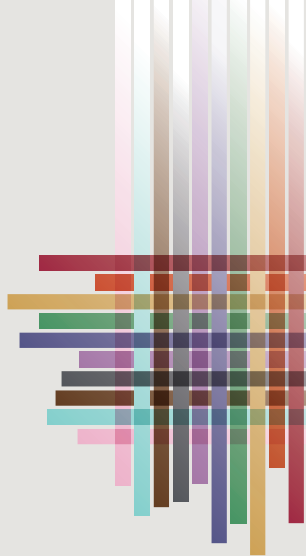
- 12:00 St. Louis Teen Talent Competition (9)
- 1:00 Bugs That Rule the World
- 2:00 Nova
- 3:00 In the Americas
- 3:30 Best of the Joy of Painting
- 4:00 Rare Visions & Roadside Revelations
- 4:30 Travelscope

**SUN | MAY 18**

**MORNING**


- 5:00 Rick Steves' Europe
- 5:30 In the Americas
- 6:00 Wild Kratts
- 6:30 Alma's Way
- 7:00 Lyla in the Loop


See it now! Closes July 6!  
**FREE Admission!**



# Gateway to Pride

The first-ever full-scale exhibit about  
St. Louis's fascinating and powerfully  
relevant LGBTQIA+ history





**MISSOURI HISTORY MUSEUM**  
MISSOURI HISTORICAL SOCIETY

**Forest Park • mohistory.org**

- 7:30 Carl the Collector
- 8:00 Daniel Tiger's Neighborhood
- 8:30 Rosie's Rules
- 9:00 Sesame Street
- 9:30 Living St. Louis (9)
- 10:00 Ireland with Michael
- 10:30 Weekends with Yankee
- 11:00 View Finders
- 11:30 tasteMAKERS

**AFTERNOON**

- 12:00 Secrets of the Royal Palaces: Windsor Castle
- 1:00 Great Performances: Yellow Face
- 3:00 In Gratitude: Honor Flight of the Ozarks
- 4:30 Brokenwood Mysteries
- 6:00 PBS News Weekend
- 6:30 Samantha Brown's Places to Love

**EVENING**

- 7:00 Call the Midwife, Season Finale
- 8:00 Miss Austen on Masterpiece
- 10:00 Movie: The Great Train Robbery (1978)

**LATE NIGHT**

- 12:00 Celebrity Antiques Road Trip
- 1:00 Call the Midwife
- 2:00 Whitstable Pearl
- 3:00 In the Americas
- 3:30 Best of the Joy of Painting
- 4:00 Rare Visions & Roadside Revelations
- 4:30 Travelscope

**MON | MAY 19**

**EVENING**

- 7:00 Living St. Louis (9)
- 7:30 Things We Don't Talk About
- 8:00 Antiques Roadshow
- 9:00 American Experience: Mr. Polaroid

- 10:00 Independent Lens: Who Is Michael Jang?  
 11:00 BBC News  
 11:30 Amanpour and Company

**LATE NIGHT**

- 12:30 NHK Newslines  
 1:00 Miss Austen  
 3:00 In the Americas  
 3:30 Best of the Joy of Painting  
 4:00 Rare Visions & Roadside Revelations  
 4:30 Travelscope

**TUE | MAY 20****EVENING**

- 7:00 Finding Your Roots  
 8:00 Deadlock  
 9:00 Frontline  
 10:00 80 Years Later  
 11:00 BBC News  
 11:30 Amanpour and Company

**LATE NIGHT**

- 12:30 NHK Newslines  
 1:00 Antiques Roadshow  
 2:00 American Experience  
 3:00 In the Americas  
 3:30 Best of the Joy of Painting  
 4:00 Rare Visions & Roadside Revelations  
 4:30 Travelscope

**WED | MAY 21****EVENING**

- 7:00 Nature: Equus: Story of the Horse: Origins  
 8:00 Nova: Decoding the Universe: Cosmos  
 9:00 Bugs That Rule the World (3 of 4)  
 10:00 Evolution Earth: Heat  
 11:00 BBC News  
 11:30 Amanpour and Company

**LATE NIGHT**

- 12:30 NHK Newslines  
 1:00 Finding Your Roots  
 2:00 Deadlock  
 3:00 In the Americas  
 3:30 Best of the Joy of Painting  
 4:00 Rare Visions & Roadside Revelations  
 4:30 Travelscope

**THU | MAY 22****EVENING**

- 7:00 Donnybrook (9)  
 7:30 Living St. Louis (9)  
 8:00 Whitstable Pearl  
 9:00 Brokenwood Mysteries  
 10:30 Decades: 1950-1960 (9)  
 11:00 BBC News  
 11:30 Amanpour and Company

**LATE NIGHT**

- 12:30 NHK Newslines  
 1:00 Nature  
 2:00 Nova  
 3:00 In the Americas  
 3:30 Best of the Joy of Painting  
 4:00 Rare Visions & Roadside Revelations  
 4:30 Travelscope

**FRI | MAY 23****EVENING**

- 7:00 Washington Week with the Atlantic  
 7:30 Donnybrook (9)  
 8:00 Vietnam War (8 of 10)  
 10:00 New Leash on Life: The K9s for Warriors Story  
 11:00 BBC News  
 11:30 Amanpour and Company

**LATE NIGHT**

- 12:30 NHK Newslines  
 1:00 Donnybrook (9)  
 1:30 Living St. Louis (9)  
 2:00 Frontline  
 3:00 In the Americas  
 3:30 Best of the Joy of Painting  
 4:00 Rare Visions & Roadside Revelations  
 4:30 Travelscope

**SAT | MAY 24****MORNING**

- 5:00 Rick Steves' Europe  
 5:30 America's Heartland  
 6:00 Wild Kratts  
 6:30 Alma's Way  
 7:00 Lyla in the Loop  
 7:30 Carl the Collector  
 8:00 Daniel Tiger's Neighborhood  
 8:30 Rosie's Rules  
 9:00 Sesame Street  
 9:30 Work It Out Wombats!  
 10:00 J Schwanke's Life in Bloom

- 10:30 Les Stroud's Wild Harvest  
 11:00 New Scandinavian Cooking  
 11:30 Pati's Mexican Table

**AFTERNOON**

- 12:00 Christopher Kimball's Milk Street Television  
 12:30 America's Test Kitchen  
 1:00 America's Test Kitchen  
 1:30 Cook's Country  
 2:00 Cook's Country  
 2:30 Key Ingredient with Sheri Castle  
 3:00 Lidia's Kitchen  
 3:30 America the Bountiful  
 4:00 MotorWeek  
 4:30 Curious Traveler  
 5:00 This Old House  
 5:30 Ask This Old House  
 6:00 PBS News Weekend  
 6:30 Papa Ray's Vintage Vinyl Roadshow

**EVENING**

- 7:00 Antiques Roadshow  
 8:00 As Time Goes By  
 8:30 Keeping Up Appearances  
 9:00 Movie: The Great Train Robbery (1978)  
 11:30 Austin City Limits

**LATE NIGHT**

- 12:30 Decades: 1950-1960 (9)  
 1:00 Bugs That Rule the World  
 2:00 Nova  
 3:00 In the Americas  
 3:30 Best of the Joy of Painting  
 4:00 Rare Visions & Roadside Revelations  
 4:30 Travelscope

**SUN | MAY 25****MORNING**

- 5:00 Rick Steves' Europe  
 5:30 In the Americas  
 6:00 Wild Kratts  
 6:30 Alma's Way  
 7:00 Lyla in the Loop  
 7:30 Carl the Collector  
 8:00 Daniel Tiger's Neighborhood  
 8:30 Rosie's Rules  
 9:00 Sesame Street  
 9:30 Living St. Louis (9)  
 10:00 Ireland with Michael  
 10:30 Weekends with Yankee

11:00 View Finders  
11:30 tasteMAKERS

**AFTERNOON**

12:00 Secrets of the Royal Palaces: Greenwich Palace  
1:00 Great Performances: Girl from the North Country  
3:30 Miles, Morale, and Memories: Bob Hope and World War II  
4:30 Brokenwood Mysteries  
6:00 PBS News Weekend  
6:30 Samantha Brown's Places to Love

**EVENING**

7:00 National Memorial Day Concert 2025  
8:30 National Memorial Day Concert 2025 Encore  
10:00 Movie: La La Land (2016)

**LATE NIGHT**

12:00 Celebrity Antiques Road Trip  
1:00 80 Years Later  
2:00 Whitstable Pearl  
3:00 In the Americas  
3:30 Best of the Joy of Painting  
4:00 Rare Visions & Roadside Revelations  
4:30 Travelscope

**MON | MAY 26****EVENING**

7:00 Living St. Louis (9)  
7:30 Things We Don't Talk About  
8:00 Antiques Roadshow  
9:00 Antiques Roadshow  
10:00 Independent Lens: Make Peace or Die: Honor the Fallen  
11:30 Amanpour and Company

**LATE NIGHT**

12:30 NHK Newline  
1:00 Cities of Light: The Rise and Fall of Islamic Spain  
3:00 In the Americas  
3:30 Best of the Joy of Painting  
4:00 Rare Visions & Roadside Revelations  
4:30 Travelscope

**TUE | MAY 27****EVENING**

7:00 Finding Your Roots  
8:00 Concrete Jungle Gym

9:30 Railroad Stations in American Life  
11:00 BBC News  
11:30 Amanpour and Company

**LATE NIGHT**

12:30 NHK Newline  
1:00 Antiques Roadshow  
2:00 Antiques Roadshow  
3:00 In the Americas  
3:30 Best of the Joy of Painting  
4:00 Rare Visions & Roadside Revelations  
4:30 Travelscope

**WED | MAY 28****EVENING**

7:00 Equus: Story of the Horse: Chasing the Wind  
8:00 Nova: Decoding the Universe: Quantum  
9:00 Bugs That Rule the World (4 of 4)  
10:00 Evolution Earth: Ice  
11:00 BBC News  
11:30 Amanpour and Company

**LATE NIGHT**

12:30 NHK Newline  
1:00 Finding Your Roots  
2:00 Railroad Stations in American Life  
3:30 Best of the Joy of Painting  
4:00 Rare Visions & Roadside Revelations  
4:30 Travelscope

**THU | MAY 29****EVENING**

7:00 Donnybrook (9)  
7:30 Living St. Louis (9)  
8:00 Whitstable Pearl  
9:00 Brokenwood Mysteries  
10:30 Decades: 1960-1970 (9)  
11:00 BBC News  
11:30 Amanpour and Company

**LATE NIGHT**

12:30 NHK Newline  
1:00 Nature  
2:00 Nova  
3:00 In the Americas  
3:30 Best of the Joy of Painting  
4:00 Rare Visions & Roadside Revelations  
4:30 Travelscope

**FRI | MAY 30****EVENING**

7:00 Washington Week with The Atlantic  
7:30 Donnybrook (9)  
8:00 Defying Death on the Atlantic  
9:00 Eyes of the World: From D-Day to VE Day  
11:00 BBC News  
11:30 Amanpour and Company

**LATE NIGHT**

12:30 NHK Newline  
1:00 Donnybrook (9)  
1:30 Living St. Louis (9)  
2:00 Seabees on Iwo Jima  
3:00 In the Americas  
3:30 The Best of the Joy of Painting  
4:00 Rare Visions & Roadside Revelations  
4:30 Travelscope

**SAT | MAY 31****MORNING**

5:00 Rick Steves' Europe  
5:30 America's Heartland  
6:00 Wild Kratts  
6:30 Alma's Way  
7:00 Lyla in the Loop  
7:30 Carl the Collector  
8:00 Rick Steves' Mighty Alps (PB)  
9:30 Great Scenic Railway Journeys' 30th Anniversary Special (PB)  
11:30 America's Home Cooking: Easy Recipes for Thrifty Cooking (PB)

**AFTERNOON**

1:30 Cooking with Legends: Lidia Bastianich and Jacques Pepin (PB)  
3:00 Wish You Were Here! A Century of Missouri State Parks (9) (PB)  
4:00 50 Years with Peter, Paul & Mary (PB)  
6:00 Stan Musial: The Legend of Stan the Man (PB)

**EVENING**

8:30 60s and 70s Soul Celebration (PB)  
11:30 Joe Bonamassa and Orchestra: Live at the Hollywood Bowl (PB)

**LATE NIGHT**

1:00 Deconstructing The Beatles (PB)  
1:30 Great Scenic Railway Journeys' 30th Anniversary Special (PB)  
3:30 Cooking with Legends: Lidia Bastianich and Jacques Pepin (PB)

**STREAM ANYTIME**

Most of our programs are available to stream free for a limited time on the PBS App and for extended periods with Nine PBS Passport. You can always stream our broadcast live on any device at [ninepbs.org/live](http://ninepbs.org/live) and access our content with the free Local Now app and with Hulu + Live TV, YouTube TV, and DirecTV Stream subscriptions.

**LISTINGS KEY**

(9) Nine PBS production  
(PB) Program contains pledge breaks

**WEEKDAYS**

5:00	Rick Steves' Europe
5:30	Classical Stretch
6:00	BBC News
6:30	Alma's Way
7:00	Lyla in the Loop
7:30	Carl the Collector
8:00	Daniel Tiger's Neighborhood
8:30	Rosie's Rules
9:00	Sesame Street
9:30	Teaching in Room 9
10:00	Work It Out Wombats!
10:30	Pinkalicious & Peterrific
11:00	Elinor Wonders Why
11:30	Nature Cat
12:00	Antiques Roadshow
12:30	
1:00	
1:30	General Audience (Adult) Programming
2:00	
2:30	
3:00	Molly of Denali
3:30	Wild Kratts
4:00	Odd Squad
4:30	Arthur
5:00	Alma's Way
5:30	BBC News America
6:00	PBS News Hour



Over the air: 9.1 | Spectrum digital cable: 709

**SUN | JUN 1**

**MORNING**

- 5:00 Rick Steves' Europe
- 5:30 In the Americas
- 6:00 Wild Kratts
- 6:30 Alma's Way
- 7:00 Lyla in the Loop
- 7:30 Carl the Collector
- 8:00 Wish You Were Here: A Century of Missouri State Parks (9) (PB)
- 9:00 The Legend of Stan the Man Musial (PB)
- 11:30 Ken Burns: The National Parks (PB)

**AFTERNOON**

- 1:30 Great Performances: Kiss Me, Kate (PB)
- 4:30 Deconstructing The Beatles (PB)
- 6:00 Quilting Women of Gee's Bend (PB)

**EVENING**

- 7:30 Classical Rewind (PB)
- 9:00 Cozy Mysteries of Masterpiece Mystery (PB)
- 10:30 Rick Steves' Mighty Alps (PB)

**LATE NIGHT**

- 12:00 Bruce Springsteen & The E Street Band: No Nukes (PB)
- 2:00 60s and 70s Soul Celebration (PB)

**MON | JUN 2**

**EVENING**

- 7:00 Joe Bonamassa & Orchestra: Live at the Hollywood Bowl (PB)
- 8:30 Carole King & James Taylor Live at the Troubadour (PB)
- 10:00 Great Scenic Railway Journeys' 30th Anniversary Special (PB)

**LATE NIGHT**

- 12:00 Wish You Were Here: A Century of Missouri State Parks (9) (PB)
- 1:00 BBC News
- 1:30 Amanpour and Company
- 2:30 NHK Newslines
- 3:00 Ken Burns: The National Parks (PB)

**TUE | JUN 3**

**EVENING**

- 7:00 Quilting Women of Gee's Bend (PB)
- 8:30 The Underground Railroad: The Paths and Places of Refuge (PB)

- 9:30 The Commodores Live (PB)
- 11:00 50 Years with Peter, Paul & Mary (PB)

**LATE NIGHT**

- 1:00 BBC News
- 1:30 Amanpour and Company
- 2:30 NHK Newslines
- 3:00 America's Home Cooking: Easy Recipes for Thrifty Cooking (PB)

**WED | JUN 4**

**EVENING**

- 7:00 Wish You Were Here: A Century of Missouri State Parks (9) (PB)
- 8:00 Deconstructing The Beatles (PB)
- 9:30 Concert for George (PB)
- 11:30 Rick Steves' Mighty Alps (PB)

**LATE NIGHT**

- 1:00 BBC News
- 1:30 Amanpour and Company
- 2:30 NHK Newslines
- 3:00 All New Rock, Pop and Doo Wop (PB)

**THU | JUN 5**

**EVENING**

- 7:00 Donnybrook (9)
- 8:00 Joe Bonamassa & Orchestra: Live at the Hollywood Bowl (PB)
- 9:30 The Legend of Stan the Man Musial (PB)

**LATE NIGHT**

- 12:00 The Underground Railroad: The Paths and Places of Refuge (PB)
- 1:00 BBC News
- 1:30 Amanpour and Company
- 2:30 NHK Newslines
- 3:00 50 Years with Peter, Paul & Mary (PB)

**FRI | JUN 6**

**EVENING**

- 7:00 Washington Week with The Atlantic
- 7:30 Concert for George (PB)
- 9:30 Aretha! Starring Shélea & Pacific Symphony (PB)
- 11:00 Bruce Springsteen & The E Street Band: No Nukes (PB)



LATE NIGHT

- 1:00 BBC News
- 1:30 Amanpour and Company
- 2:30 NHK Newslines
- 3:00 Concert for George (PB)

**SAT | JUN 7**

MORNING

- 5:00 Rick Steves' Europe
- 5:30 America's Heartland
- 6:00 Wild Kratts
- 6:30 Alma's Way
- 7:00 Lyla in the Loop
- 7:30 Carl the Collector
- 8:00 Five-Minute Yoga Fix with Peggy Cappy (PB)
- 9:00 Cooking with Legends: Lidia Bastianich and Jacques Pepin (PB)
- 10:30 Prue Leith's Cotswold Kitchen (PB)

AFTERNOON

- 1:00 America's Test Kitchen Celebrates 25 Years (PB)
- 2:30 Rick Steves' Europe: Great German Cities (PB)
- 4:30 Best of the 60s (PB)

EVENING

- 7:00 Neil Diamond: Hot August Night/ NYC (PB)
- 8:30 The Highwaymen Live at Nassau Coliseum (PB)
- 10:00 Stevie Ray Vaughan & Double Trouble Live at the El Mocambo (PB)
- 11:30 Tina Turner: One Last Time (PB)

LATE NIGHT

- 1:00 Quilting Women of Gee's Bend (PB)
- 2:30 The Underground Railroad: The Paths and Places of Refuge (PB)
- 3:30 The Highwaymen Live at Nassau Coliseum (PB)

**SUN | JUN 8**

MORNING

- 5:00 Rick Steves' Europe
- 5:30 In the Americas
- 6:00 Wild Kratts
- 6:30 Alma's Way
- 7:00 Lyla in the Loop
- 7:30 Carl the Collector
- 8:00 Social Security & You with Mary Beth Franklin (PB)
- 9:30 Memory Makeover with Daniel Amen, MD (PB)

- 11:30 Great Scenic Railway Journeys' 30th Anniversary Special (PB)

AFTERNOON

- 1:30 Carole King & James Taylor Live at the Troubadour (PB)
- 3:00 Kris Kristofferson: Life and Songs (PB)
- 4:30 Rick Steves' Fascism in Europe (PB)
- 6:00 Great Performances: Andrea Bocelli 30th: The Celebration (PB)

EVENING

- 8:00 All Creatures Great and Small: The Wisdom of the Dales (PB)
- 9:30 Best of the 60s (PB)

LATE NIGHT

- 12:00 Raising Mentally Strong Kids with Daniel Amen, MD (PB)
- 1:30 Great Performances: Andrea Bocelli 30th: The Celebration (PB)
- 3:30 Social Security and You with Mary Beth Franklin (PB)

**MON | JUN 9**

EVENING

- 7:00 Living St. Louis (9)
- 7:30 Things We Don't Talk About
- 8:00 Antiques Roadshow
- 9:00 Antiques Roadshow
- 10:00 To be announced
- 11:00 BBC News
- 11:30 Amanpour and Company

LATE NIGHT

- 12:30 NHK Newslines
- 1:00 American Masters
- 3:00 In the Americas
- 3:30 Best of the Joy of Painting
- 4:00 Rare Visions & Roadside Revelations
- 4:30 Travelscope

**TUE | JUN 10**

EVENING

- 7:00 Finding Your Roots
- 8:00 American Experience: Nazi Town, USA
- 9:00 Frontline
- 11:00 BBC News
- 11:30 Amanpour and Company

LATE NIGHT

- 12:30 NHK Newslines
- 1:00 Antiques Roadshow

- 2:00 Antiques Roadshow
- 3:00 In the Americas
- 3:30 Best of the Joy of Painting
- 4:00 Rare Visions & Roadside Revelations
- 4:30 Travelscope

**WED | JUN 11**

EVENING

- 7:00 Nature: The Ocean's Greatest Feast
- 8:00 Nova: Extreme Airport Engineering
- 9:00 Nova: London Super Tunnel
- 11:00 BBC News
- 11:30 Amanpour and Company

LATE NIGHT

- 12:30 NHK Newslines
- 1:00 Finding Your Roots
- 2:00 American Experience
- 3:00 In the Americas
- 3:30 Best of the Joy of Painting
- 4:00 Rare Visions & Roadside Revelations
- 4:30 Travelscope

**THU | JUN 12**

EVENING

- 7:00 Donnybrook (9)
- 7:30 Living St. Louis (9)
- 8:00 Whitstable Pearl
- 9:00 Brokenwood Mysteries
- 10:30 Decades: 1900-2000 (9)
- 11:30 Amanpour and Company

LATE NIGHT

- 12:30 NHK Newslines
- 1:00 Nature
- 2:00 Nova
- 3:00 In the Americas
- 3:30 Best of the Joy of Painting
- 4:00 Rare Visions & Roadside Revelations
- 4:30 Travelscope

**FRI | JUN 13**

EVENING

- 7:00 Washington Week with The Atlantic
- 7:30 Donnybrook (9)
- 8:00 Vietnam War (9 of 10)
- 10:00 Disco: Soundtrack of a Revolution (1 of 3)
- 11:00 BBC News
- 11:30 Amanpour and Company

LATE NIGHT

- 12:30 NHK Newsline
- 1:00 Donnybrook (9)
- 1:30 Living St. Louis (9)
- 2:00 Frontline
- 3:00 In the Americas
- 3:30 Best of the Joy of Painting
- 4:00 Rare Visions & Roadside Revelations
- 4:30 Travelscope

SAT | JUN 14

MORNING

- 5:00 Rick Steves' Europe
- 5:30 America's Heartland
- 6:00 Wild Kratts
- 6:30 Alma's Way
- 7:00 Lyla in the Loop
- 7:30 Carl the Collector
- 8:00 Daniel Tiger's Neighborhood
- 8:30 Rosie's Rules
- 9:00 Sesame Street
- 9:30 Work It Out Wombats!
- 10:00 J Schwanke's Life in Bloom
- 10:30 Spatchcock Funk
- 11:00 New Scandinavian Cooking
- 11:30 Pati's Mexican Table

AFTERNOON

- 12:00 Christopher Kimball's Milk Street Television
- 12:30 America's Test Kitchen
- 1:00 America's Test Kitchen
- 1:30 Cook's Country
- 2:00 Cook's Country
- 2:30 Key Ingredient with Sheri Castle
- 3:00 Lidia's Kitchen
- 3:30 America the Bountiful
- 4:00 MotorWeek
- 4:30 Curious Traveler
- 5:00 This Old House
- 5:30 Ask This Old House
- 6:00 PBS News Weekend
- 6:30 Papa Ray's Vintage Vinyl Roadshow

EVENING

- 7:00 Antiques Roadshow
- 8:00 As Time Goes By
- 8:30 Keeping Up Appearances
- 9:00 Movie: Gunfight at the O.K. Corral (1957)
- 11:00 Austin City Limits

LATE NIGHT

- 12:00 Magical Land of Oz
- 3:00 In the Americas
- 3:30 Best of the Joy of Painting
- 4:00 Rare Visions & Roadside Revelations
- 4:30 Travelscope

SUN | JUN 15

MORNING

- 5:00 Rick Steves' Europe
- 5:30 In the Americas
- 6:00 Wild Kratts
- 6:30 Alma's Way
- 7:00 Lyla in the Loop
- 7:30 Carl the Collector
- 8:00 Daniel Tiger's Neighborhood
- 8:30 Rosie's Rules
- 9:00 Sesame Street
- 9:30 Living St. Louis (9)
- 10:00 Ireland with Michael
- 10:30 Weekends with Yankee
- 11:00 View Finders
- 11:30 tasteMAKERS

AFTERNOON

- 12:00 Secrets of the Royal Palaces: Hampton Court
- 1:00 Great Performances at the Met: Aida
- 4:00 My Music with Rhiannon Giddens
- 4:30 Brokenwood Mysteries
- 6:00 PBS News Weekend
- 6:30 Samantha Brown's Place to Love

EVENING

- 7:00 Patience, Series Broadcast Premiere
- 8:00 Grantchester on Masterpiece, Season Premiere
- 9:00 Atlantic Crossing on Masterpiece
- 10:00 Movie: Gunfight at the O.K. Corral (1957)

LATE NIGHT

- 12:00 Celebrity Antiques Road Trip
- 1:00 Patience
- 2:00 Whitstable Pearl
- 3:00 In the Americas
- 3:30 Best of the Joy of Painting
- 4:00 Rare Visions & Roadside Revelations
- 4:30 Travelscope

MON | JUN 16

EVENING

- 7:00 Walking with Dinosaurs (1-2)
- 9:00 Nature: Museum Alive with David Attenborough
- 10:00 Fossil Country
- 11:00 BBC News
- 11:30 Amanpour and Company

LATE NIGHT

- 12:30 NHK Newsline
- 1:00 Grantchester
- 2:00 Atlantic Crossing
- 3:00 In the Americas
- 3:30 Best of the Joy of Painting
- 4:00 Rare Visions & Roadside Revelations
- 4:30 Travelscope

TUE | JUN 17

EVENING

- 7:00 Walking with Dinosaurs (3-4)
- 9:00 Nature: Attenborough and the Jurassic Sea Monster
- 10:00 Paleo Sleuths
- 11:00 BBC News
- 11:30 Amanpour and Company

LATE NIGHT

- 12:30 NHK Newsline
- 1:00 Walking with Dinosaurs (1-2)
- 3:00 In the Americas
- 3:30 Best of the Joy of Painting
- 4:00 Rare Visions & Roadside Revelations
- 4:30 Travelscope

WED | JUN 18

EVENING

- 7:00 Walking with Dinosaurs (5-6)
- 9:00 Nova: Alaskan Dinosaurs
- 11:00 BBC News
- 11:30 Amanpour and Company

LATE NIGHT

- 12:30 NHK Newsline
- 1:00 Walking with Dinosaurs (3-4)
- 3:00 In the Americas
- 3:30 Best of the Joy of Painting
- 4:00 Rare Visions & Roadside Revelations
- 4:30 Travelscope

**THU | JUN 19**

**EVENING**

- 7:00 Donnybrook (9)
- 7:30 Living St. Louis (9)
- 8:00 Whitstable Pearl
- 9:00 Brokenwood Mysteries
- 10:30 Buffalo Soldiers: Fighting on Two Fronts: A Local, USA, Special
- 11:30 Amanpour and Company

**LATE NIGHT**

- 12:30 NHK Newline
- 1:00 Walking with Dinosaurs (5-6)
- 3:00 In the Americas
- 3:30 Best of the Joy of Painting
- 4:00 Rare Visions & Roadside Revelations
- 4:30 Travelscope

**FRI | JUN 20**

**EVENING**

- 7:00 Washington Week with The Atlantic
- 7:30 Donnybrook (9)
- 8:00 The Vietnam War (10 of 10)
- 10:00 Disco: Soundtrack of a Revolution (2 of 3)
- 11:00 BBC News
- 11:30 Amanpour and Company

**LATE NIGHT**

- 12:30 NHK Newline
- 1:00 Donnybrook (9)
- 1:30 Living St. Louis (9)
- 2:00 Fossil Country
- 3:00 In the Americas
- 3:30 Best of the Joy of Painting
- 4:00 Rare Visions & Roadside Revelations
- 4:30 Travelscope

**SAT | JUN 21**

**MORNING**

- 5:00 Rick Steves' Europe
- 6:00 Wild Kratts
- 6:30 Alma's Way
- 7:00 Lyla in the Loop
- 7:30 Carl the Collector
- 8:00 Daniel Tiger's Neighborhood
- 8:30 Rosie's Rules
- 9:00 Sesame Street
- 9:30 Work It Out Wombats!
- 10:00 J Schwanke's Life in Bloom
- 10:30 Spatchcock Funk

- 11:00 New Scandinavian Cooking
- 11:30 Pati's Mexican Table

**AFTERNOON**

- 12:00 Christopher Kimball's Milk Street Television
- 12:30 America's Test Kitchen
- 1:00 America's Test Kitchen
- 1:30 Cook's Country
- 2:00 Cook's Country
- 2:30 Key Ingredient with Sheri Castle
- 3:00 Lidia's Kitchen
- 3:30 America the Bountiful
- 4:00 MotorWeek
- 4:30 Curious Traveler
- 5:00 This Old House
- 5:30 Ask This Old House
- 6:00 PBS News Weekend
- 6:30 Papa Ray's Vintage Vinyl Roadshow

**EVENING**

- 7:00 Antiques Roadshow
- 8:00 As Time Goes By
- 8:30 Keeping Up Appearances
- 9:00 Movie: High Noon (1952)
- 11:00 Austin City Limits

**LATE NIGHT**

- 12:00 Disco: Soundtrack of a Revolution (1-3)
- 3:00 In the Americas
- 3:30 Best of the Joy of Painting
- 4:00 Rare Visions & Roadside Revelations
- 4:30 Travelscope

**SUN | JUN 22**

**MORNING**

- 5:00 Rick Steves' Europe
- 5:30 In the Americas
- 6:00 Wild Kratts
- 6:30 Alma's Way
- 7:00 Lyla in the Loop
- 7:30 Carl the Collector
- 8:00 Daniel Tiger's Neighborhood
- 8:30 Rosie's Rules
- 9:00 Sesame Street
- 9:30 Living St. Louis (9)
- 10:00 Ireland with Michael
- 10:30 Weekends with Yankee
- 11:00 View Finders
- 11:30 tasteMAKERS

**AFTERNOON**

- 12:00 Walking with Dinosaurs Marathon (1-6)
- 5:00 Brokenwood Mysteries
- 6:30 PBS News Weekend

**EVENING**

- 7:00 Patience
- 8:00 Grantchester on Masterpiece
- 9:00 Atlantic Crossing on Masterpiece
- 10:00 Movie: High Noon (1952)

**LATE NIGHT**

- 12:00 Celebrity Antiques Road Trip
- 1:00 Patience
- 2:00 Whitstable Pearl
- 3:00 In the Americas
- 3:30 Best of the Joy of Painting
- 4:00 Rare Visions & Roadside Revelations
- 4:30 Travelscope

**MON | JUN 23**

**EVENING**

- 7:00 Living St. Louis (9)
- 7:30 Things We Don't Talk About
- 8:00 Antiques Roadshow
- 9:00 Antiques Roadshow
- 10:00 POV
- 11:00 BBC News
- 11:30 Amanpour and Company

**LATE NIGHT**

- 12:30 NHK Newline
- 1:00 Grantchester
- 2:00 Atlantic Crossing
- 3:00 In the Americas
- 3:30 Best of the Joy of Painting
- 4:00 Rare Visions & Roadside Revelations
- 4:30 Travelscope

**TUE | JUN 24**

**EVENING**

- 7:00 Going Your Way (9)
- 8:00 Caregiving, Broadcast Premiere
- 11:00 BBC News
- 11:30 Amanpour and Company

**LATE NIGHT**

- 12:30 NHK Newline
- 1:00 Antiques Roadshow
- 2:00 Antiques Roadshow
- 3:00 In the Americas

- 3:30 Best of the Joy of Painting
- 4:00 Rare Visions & Roadside Revelations
- 4:30 Travelscope

**WED | JUN 25**

**EVENING**

- 7:00 Walking with Dinosaurs Encore (1 of 6)
- 8:00 Human Footprint, Season 2 Premiere
- 9:00 Nova: Great Mammoth Mystery
- 11:00 BBC News
- 11:30 Amanpour and Company

**LATE NIGHT**

- 12:30 NHK Newslines
- 1:00 Caregiving
- 3:00 In the Americas
- 3:30 Best of the Joy of Painting
- 4:00 Rare Visions & Roadside Revelations
- 4:30 Travelscope

**THU | JUN 26**

**EVENING**

- 7:00 Donnybrook (9)
- 7:30 Living St. Louis (9)
- 8:00 Whitstable Pearl
- 9:00 American Masters: Janis Ian: Breaking Silence
- 11:00 BBC News
- 11:30 Amanpour and Company

**LATE NIGHT**

- 12:30 NHK Newslines
- 1:00 Human Footprint
- 2:00 Nova
- 3:00 In the Americas
- 3:30 Best of the Joy of Painting
- 4:00 Rare Visions & Roadside Revelations
- 4:30 Travelscope

**FRI | JUN 27**

**EVENING**

- 7:00 Washington Week with The Atlantic
- 7:30 Donnybrook (9)
- 8:00 American Masters: Hannah Arendt: Facing Tyranny
- 10:00 Disco: Soundtrack of a Revolution (3 of 3)
- 11:00 BBC News
- 11:30 Amanpour and Company

**LATE NIGHT**

- 12:30 NHK Newslines
- 1:00 Donnybrook (9)
- 1:30 Living St. Louis (9)
- 2:00 Going Your Way (9)
- 3:00 In the Americas
- 3:30 Best of the Joy of Painting
- 4:00 Rare Visions & Roadside Revelations
- 4:30 Travelscope

**SAT | JUN 28**

**MORNING**

- 5:00 Rick Steves' Europe
- 5:30 America's Heartland
- 6:00 Wild Kratts
- 6:30 Alma's Way
- 7:00 Lyla in the Loop
- 7:30 Carl the Collector
- 8:00 Daniel Tiger's Neighborhood
- 8:30 Rosie's Rules
- 9:00 Sesame Street
- 9:30 Work It Out Wombats!
- 10:00 J Schwanke's Life in Bloom
- 10:30 Spatchcock Funk
- 11:00 New Scandinavian Cooking
- 11:30 Pati's Mexican Table

**AFTERNOON**

- 12:00 Christopher Kimball's Milk Street Television
- 12:30 America's Test Kitchen
- 1:00 America's Test Kitchen
- 1:30 Cook's Country
- 2:00 Cook's Country
- 2:30 Key Ingredient with Sheri Castle
- 3:00 Lidia's Kitchen
- 3:30 America the Bountiful
- 4:00 MotorWeek
- 4:30 Curious Traveler
- 5:00 This Old House
- 5:30 Ask This Old House
- 6:00 PBS News Weekend
- 6:30 Papa Ray's Vintage Vinyl Roadshow

**EVENING**

- 7:00 Antiques Roadshow
- 8:00 As Time Goes By
- 8:30 Keeping Up
- 9:00 Movie: Kate and Leopold (2001)
- 11:00 Austin City Limits

**LATE NIGHT**

- 12:00 Caregiving
- 2:00 Going Your Way (9)
- 3:00 In the Americas
- 3:30 Best of the Joy of Painting
- 4:00 Rare Visions & Roadside Revelations
- 4:30 Travelscope

**SUN | JUN 29**

**MORNING**

- 5:00 Rick Steves' Europe
- 5:30 In the Americas
- 6:00 Wild Kratts
- 6:30 Alma's Way
- 7:00 Lyla in the Loop
- 7:30 Carl the Collector
- 8:00 Daniel Tiger's Neighborhood
- 8:30 Rosie's Rules
- 9:00 Sesame Street
- 9:30 Living St. Louis (9)
- 10:00 Ireland with Michael
- 10:30 Weekends with Yankee
- 11:00 View Finders
- 11:30 tasteMAKERS

**AFTERNOON**

- 12:00 Secrets of the Royal Palaces: Osborne House
- 1:00 Great Performances as the Met: Tosca
- 3:30 My Music with Rhiannon Giddens
- 4:00 Caregiving
- 6:00 PBS News Weekend
- 6:30 Samantha Brown's Places to Love

**EVENING**

- 7:00 Patience
- 8:00 Grantchester on Masterpiece
- 9:00 Atlantic Crossing on Masterpiece
- 10:00 Movie: Kate and Leopold (2001)

**LATE NIGHT**

- 12:00 Celebrity Antiques Road Trip
- 1:00 Patience
- 2:00 Whitstable Pearl
- 3:00 In the Americas
- 3:30 Best of the Joy of Painting
- 4:00 Rare Visions & Roadside Revelations
- 4:30 Travelscope

**MON | JUN 30**

**EVENING**

- 7:00 Living St. Louis (9)
- 7:30 Things We Don't Talk About
- 8:00 Antiques Roadshow
- 9:00 Antiques Roadshow
- 10:00 POV
- 11:00 BBC News
- 11:30 Amanpour and Company

**LATE NIGHT**

- 12:30 NHK Newslines
- 1:00 Grantchester
- 2:00 Atlantic Crossing
- 3:00 In the Americas
- 3:30 Best of the Joy of Painting
- 4:00 Rare Visions & Roadside Revelations
- 4:30 Travelscope

*The Fabulous Fox*  
SAINT LOUIS

**New Season Tickets On Sale May 28!**

 <p>October 7-19, 2025</p>	 <p>November 4-16, 2025</p>	 <p>Nov 25 - Dec 7, 2025</p>
 <p>January 7-18, 2026</p>	<p><b>2025 - 2026</b> Broadway Season</p>	 <p>Jan 27 - Feb 8, 2026</p>
 <p>Feb 18 - Mar 1, 2026</p>	 <p>Mar 28 - Apr 18, 2026</p>	 <p>May 5-17, 2026</p>
<p><b>PLUS THESE BROADWAY EXTRAS</b></p>		
 <p>Nov. 18-23, 2025</p>	 <p>Dec. 12-14, 2025</p>	 <p>March 6-8, 2026</p>
 <p>April 24-26, 2026</p>	 <p>May 19-24, 2026</p>	 <p>May 29-31, 2026</p>
<p>More info available at <a href="https://www.FabulousFox.com/25-26">FabulousFox.com/25-26</a></p>		

# Repeat Schedule

Repeat times for select programs in May and June are listed below. Consult [ninepbs.org/schedule](http://ninepbs.org/schedule) or your digital television guide for the latest information. Please note that programs listed here are subject to change.

**60s and 70s Soul Celebration**

Mon 6/2, 2 am

**80 Years Later**

Mon 5/26, 1 am

**American Experience: Mr. Polaroid**

Wed 5/21, 2 am & 2 pm

**American Experience: Nazi Town, USA**

Wed 6/11, 2 pm; Thu 6/12, 2 am

**American Masters: Hopper: An American Love Story**

Sat 5/17, 2 am

**Aretha! with Shelea and the Pacific Symphony**

Fri 6/6, 9:30 pm

**Best of the 60s**

Sun 6/8, 9:30 pm

**Bruce Springsteen & the E Street Band: No Nukes**

Fri 6/6, 11 pm

**Bugs That Rule the World**

Sun 5/11, 5/18, 5/25, 1 am

**Caregiving**

Wed 6/25, 1 pm; Thu 6/26, 1 am; Sun 6/29, midnight; Sun 6/29, 4 pm

**Carole King & James Taylor Live at the Troubadour**

Fri 6/6, noon; Sun 6/8, 1:30 pm

**Cities of Light: The Rise and Fall of Islamic Spain**

Tue 5/27, 1 pm

**Concert for George**

Fri 6/6, 7:30 pm; Sat 6/7, 3 am

**Cooking with Legends: Lidia Bastianich & Jacques Pepin**

Sun 6/1, 3:30 am; Mon 6/2, Noon; Sat 6/7, 9 am

**Deadlock**

Thu 5/22, 2 am

**Deconstructing The Beatles**

Wed 6/4, 8 pm; Fri 6/6, 1:30 pm

**Disco: Soundtrack of a Revolution (1-3)**

Sun 6/22, midnight-3 am

**Fossil Country**

Sat 6/21, 2 am

**Going Your Way (9)**

Wed 6/25, 10 pm; Sat 6/28, 2 am; Sun 6/29, 2 am

**Grantchester on Masterpiece**

Tue 6/17, 6/24, 7/1 am

**Great Performances: Andrea Bocelli 30th: The Celebration**

Mon 6/9, 1:30 am

**Great Scenic Railway Journeys' 30th Anniversary Special**

Sun 6/1, 1:30 am; Mon 6/2, 10 pm; Sun 6/8, 11:30 am

**Highwaymen Live at Nassau Coliseum**

Sun 6/8, 3:30 am

**Human Footprint**

Thu 6/26, 2 pm; Fri 6/27, 1 am; Sun 5/18, 3 pm

**Joe Bonamassa & Orchestra: Live at the Hollywood Bowl**

Mon 6/2, 7 pm; Wed 6/4, 1:30 pm; Thu 6/5, 8 pm

**Ken Burns: The National Parks**

Tue 6/3, 3 am

**Nature: Equus: Story of the Horse**

Thu 5/22 & 5/29, 1 pm; Fri 5/23 & 5/30, 1 am

**Nature: My Garden of a Thousand Bees**

Fri 5/16, 1 am

**Nature: The Ocean's Greatest Feast**

Thu 6/12, 1 pm; Fri 6/13, 1 am

**Nature: Hummingbirds of Hollywood**

Thu 5/8, 1 pm; Fri 5/9, 1 am

**Nova: Critical Condition: Health in Black America**

Fri 5/2 & 5/4, 1 am

**Nova: Decoding The Universe**

Thu 5/22 & 5/29, 2 pm; Fri 5/23 & 5/30, 2 am; Sun 5/25, 2 am

**Nova: Extreme Airport Engineering**

Thu 6/12, 2 pm; Fri 6/13, 2 am

**Nova: Great Mammoth Mystery**

Fri 6/27, 2 am

**Nova: Ultimate Crash Test**

Thu 5/8 & 5/15, 2 pm; Fri 5/9, 5/11, 5/16, 5/18, 2 am

**Patience**

Mondays at 1 am

**Quilting Women of Gee's Bend**

Tue 6/3, 7 pm; Sun 6/8, 1 am

**Railroad Stations in American Life**

Thu 5/29, 2 am

**Raising Mentally Strong Kids with Daniel Amen, MD**

Mon 6/9, midnight

**Rick Steves' Mighty Alps**

Sun 6/1, 10:30 pm; Wed 6/4, 11:30 pm

**Seabees on Iwo Jima**

Sat 5/31, 2 am

**Social Security & You with Mary Beth Franklin**

Mon 6/9, 3:30 am

**St. Louis Teen Talent Competition (9)**

Tue 5/6, 1 pm; Sat 5/10, 7 pm; Tue 5/13, 10 pm; Sun 5/18, midnight

**The Legend of Stan The Man Musial**

Sun 6/1, 9 am Thu 6/5, 9:30 pm

**Underground Railroad: The Paths & Places of Refuge**

Fri 6/6, midnight; Sun 6/8, 2:30 am

**Walking with Dinosaurs, Ep 1**

Tue 6/17, 1 pm; Wed 6/18, 1 am; Sun 6/22, 11 am; Wed 6/25, 7 pm; Thu 6/26, 1 pm

**Walking with Dinosaurs, Ep 2**

Tue 6/17, 2 pm; Wed 6/18, 2 am; Sun 6/22, noon

**Walking with Dinosaurs, Ep 3**

Wed 6/18, 1 pm; Thu 6/19, 1 am; Sun 6/22, 1 pm

**Walking with Dinosaurs, Ep 4**

Wed 6/18, 2 pm; Thu 6/19, 2 am; Sun 6/22, 2 pm

**Walking with Dinosaurs, Ep 5**

Thu 6/19, 1 pm; Fri 6/20, 1 am; Sun 6/22, 3 pm

**Walking with Dinosaurs, Ep 6**

Thu 6/19, 2 pm; Fri 6/20, 2 am; Sun 6/22, 4 pm

**Whitstable Pearl**

Mon 5/19, 5/26, 6/16, 6/23, 6/30 2 am

**Wish You Were Here: A Century of Missouri State Parks (9)**

Sun 6/1, 8 am; Tue 6/3, midnight & noon; Wed 6/4, 7 pm



**STL**  
**SUMMER**  
**ADVENTURE**  
**JUNE 1-AUGUST 10**

A summer reading and exploration program powered by St. Louis Public Library and St. Louis County Library.  
 Visit [stlsummeradventure.org](http://stlsummeradventure.org) for details.




*Support provided by St. Louis Public Library Foundation*



EXPERIENCE THE SPLENDOR  
**Central Library**  
**FREE TOURS**

Call 314-338-7792 or  
 visit [spl.org](http://spl.org) for reservations.




Simplify your life.  
 Simplify your giving.

**Become a Nine PBS  
 Sustaining Member.**

[ninepbs.org/sustainer](http://ninepbs.org/sustainer)



MARYVILLE UNIVERSITY PRESENTS

# St. Louis Speakers Series®

Seven speakers who will challenge your mind, enlarge your world, and make you laugh

## 2025–2026 Season at Powell Hall



**ANTHONY FAUCI**  
Physician-Scientist and Immunologist  
October 7, 2025



**PIPPA MALMGREN**  
Geopolitical Economist  
February 24, 2026



**LT. GEN. H. R. MCMASTER**  
National Security Advisor (2017–2018)  
October 21, 2025



**MALCOLM GLADWELL**  
Best-Selling Author and Journalist  
March 17, 2026



**VLADIMIR KARA-MURZA**  
Former Russian Political Prisoner  
November 18, 2025



**CRISTINA MITTERMEIER**  
National Geographic Photographer  
April 14, 2026



**DORIS KEARNS GOODWIN**  
Pulitzer Prize Winning Historian  
January 27, 2026

SPONSORED BY



Sold by subscription only. Seating is limited.  
**ORDER NOW!** Starting at \$475 for all 7 events

**StLouisSpeakers.org**  
or call the Box Office at (314) 534-1700



scan to order

# TICKETS ON SALE NOW!